



**ELECTRONIC COPY**

LG807695400  
Report verification at igi.org



June 11, 2026  
IGI Report Number **LG807695400**  
Description **LABORATORY GROWN DIAMOND**  
Shape and Cutting Style **CONCAVE SQUARE MODIFIED BRILLIANT**  
Measurements **6.65 X 6.64 X 3.79 MM**  
**GRADING RESULTS**  
Carat Weight **1.42 CARAT**  
Color Grade **FANCY YELLOW**  
Clarity Grade **VVS 2**

**LABORATORY GROWN DIAMOND REPORT**

June 11, 2026  
IGI Report Number **LG807695400**  
Description **LABORATORY GROWN DIAMOND**  
Shape and Cutting Style **CONCAVE SQUARE MODIFIED BRILLIANT**  
Measurements **6.65 X 6.64 X 3.79 MM**

**GRADING RESULTS**

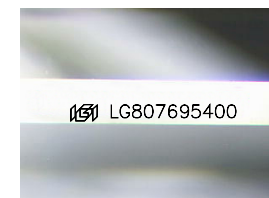
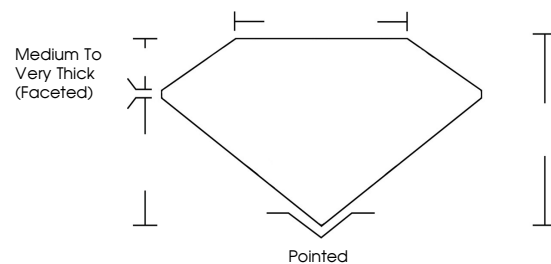
Carat Weight **1.42 CARAT**  
Color Grade **FANCY YELLOW**  
Clarity Grade **VVS 2**

**ADDITIONAL GRADING INFORMATION**

Polish **VERY GOOD**  
Symmetry **VERY GOOD**  
Fluorescence **VERY SLIGHT**  
Inscription(s) **IGI LG807695400**

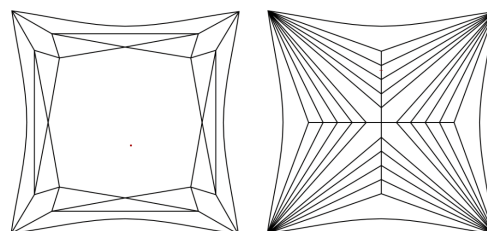
Comments: This Laboratory Grown Diamond was created by Chemical Vapor Deposition (CVD) growth process.  
Indications of post-growth treatment.

**PROPORTIONS**



Sample Image Used

**CLARITY CHARACTERISTICS**



**KEY TO SYMBOLS**

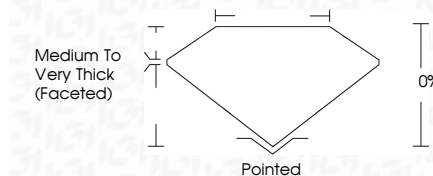
Red symbols indicate internal characteristics.  
Green symbols indicate external characteristics.

**COLOR**

D E F G H I J Faint Very Light Light

**CLARITY**

FL	IF	VVS <sup>1-2</sup>	VS <sup>1-2</sup>	SI <sup>1-2</sup>	I <sup>1-3</sup>
Flawless	Internally Flawless	Very Very Slightly Included	Very Slightly Included	Slightly Included	Included



**ADDITIONAL GRADING INFORMATION**

Polish **VERY GOOD**  
Symmetry **VERY GOOD**  
Fluorescence **VERY SLIGHT**  
Inscription(s) **IGI LG807695400**  
Comments: This Laboratory Grown Diamond was created by Chemical Vapor Deposition (CVD) growth process.  
Indications of post-growth treatment.



June 11, 2026  
IGI Report No LG807695400  
CONCAVE SQUARE MODIFIED BRILLIANT  
6.65 X 6.64 X 3.79 MM  
1.42 CARAT  
FANCY YELLOW  
VVS 2  
Medium to Very Thick (Faceted)  
Pointed  
VERY GOOD  
VERY GOOD  
VERY SLIGHT  
IGI LG807695400  
Comments: This Laboratory Grown Diamond was created by Chemical Vapor Deposition (CVD) growth process.  
Indications of post-growth treatment.