



ELECTRONIC COPY

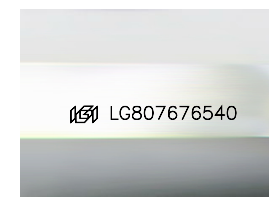
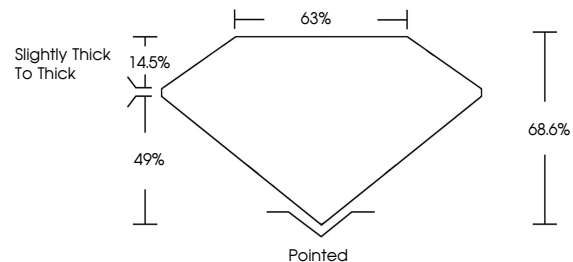
LG807676540
Report verification at igi.org



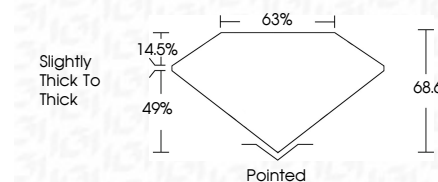
June 11, 2026
IGI Report Number **LG807676540**
Description **LABORATORY GROWN DIAMOND**
Shape and Cutting Style **CUT CORNERED
RECTANGULAR MODIFIED
BRILLIANT**
Measurements **11.80 X 8.35 X 5.73 MM**
GRADING RESULTS
Carat Weight **5.03 CARATS**
Color Grade **FANCY VIVID PINK**
Clarity Grade **VS 1**

June 11, 2026
IGI Report Number **LG807676540**
Description **LABORATORY GROWN DIAMOND**
Shape and Cutting Style **CUT CORNERED RECTANGULAR
MODIFIED BRILLIANT**
Measurements **11.80 X 8.35 X 5.73 MM**
GRADING RESULTS
Carat Weight **5.03 CARATS**
Color Grade **FANCY VIVID PINK**
Clarity Grade **VS 1**

PROPORTIONS



Sample Image Used



ADDITIONAL GRADING INFORMATION

Polish **EXCELLENT**
Symmetry **EXCELLENT**
Fluorescence **STRONG**
Inscription(s) **IGI LG807676540**

Comments: This Laboratory Grown Diamond was created by Chemical Vapor Deposition (CVD) growth process.
Indications of post-growth treatment.

ADDITIONAL GRADING INFORMATION

Polish **EXCELLENT**
Symmetry **EXCELLENT**
Fluorescence **STRONG**
Inscription(s) **IGI LG807676540**

Comments: This Laboratory Grown Diamond was created by Chemical Vapor Deposition (CVD) growth process.
Indications of post-growth treatment.

COLOR

D E F G H I J Faint Very Light Light

CLARITY

FL	IF	VS ¹⁻²	VS ¹⁻²	SI ¹⁻²	I ¹⁻³
Flawless	Internally Flawless	Very Very Slightly Included	Very Slightly Included	Slightly Included	Included



IGI



June 11, 2026
IGI Report No **LG807676540**
CUT CORNERED RECT. MODIFIED BRILLIANT
11.80 X 8.35 X 5.73 MM
Carat Weight **5.03 CARATS**
Color Grade **FANCY VIVID PINK**
Clarity Grade **VS 1**
Table **14.5%**
Depth **49%**
Girdle **Slightly thick to thick**
Culet **Pointed**
Polish **EXCELLENT**
Symmetry **EXCELLENT**
Fluorescence **STRONG**
Inscription(s) **IGI LG807676540**
Comments: This Laboratory Grown Diamond was created by Chemical Vapor Deposition (CVD) growth process.
Indications of post-growth treatment.