



ELECTRONIC COPY

LG807675751
Report verification at igi.org



June 4, 2026
IGI Report Number **LG807675751**
Description **LABORATORY GROWN DIAMOND**
Shape and Cutting Style **HEXAGONAL MODIFIED BRILLIANT**
Measurements **10.94 X 5.50 X 3.67 MM**
GRADING RESULTS
Carat Weight **1.52 CARAT**
Color Grade **E**
Clarity Grade **VS 2**

LABORATORY GROWN DIAMOND REPORT

June 4, 2026
IGI Report Number **LG807675751**
Description **LABORATORY GROWN DIAMOND**
Shape and Cutting Style **HEXAGONAL MODIFIED BRILLIANT**
Measurements **10.94 X 5.50 X 3.67 MM**

GRADING RESULTS

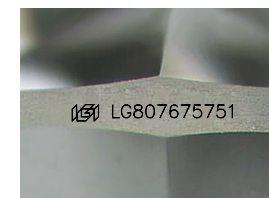
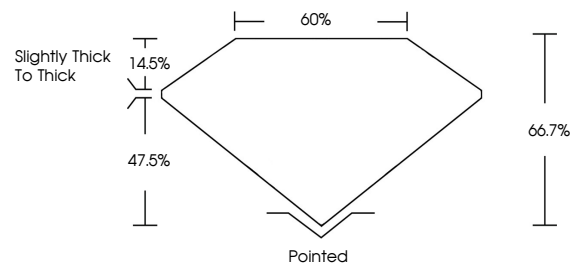
Carat Weight **1.52 CARAT**
Color Grade **E**
Clarity Grade **VS 2**

ADDITIONAL GRADING INFORMATION

Polish **EXCELLENT**
Symmetry **EXCELLENT**
Fluorescence **NONE**
Inscription(s) **IGI LG807675751**

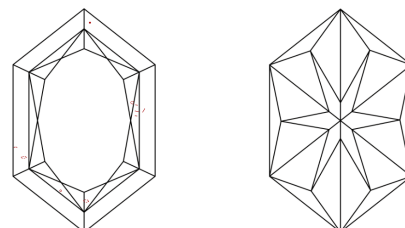
Comments: This Laboratory Grown Diamond was created by Chemical Vapor Deposition (CVD) growth process.
Type IIa

PROPORTIONS



Sample Image Used

CLARITY CHARACTERISTICS



KEY TO SYMBOLS

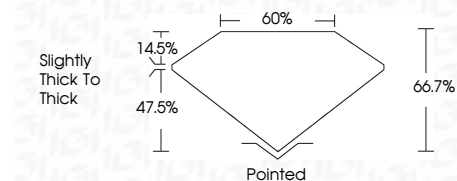
Red symbols indicate internal characteristics.
Green symbols indicate external characteristics.

COLOR

D E F G H I J Faint Very Light Light

CLARITY

FL	IF	VS ¹⁻²	VS ¹⁻²	SI ¹⁻²	I ¹⁻³
Flawless	Internally Flawless	Very Very Slightly Included	Very Slightly Included	Slightly Included	Included



ADDITIONAL GRADING INFORMATION

Polish **EXCELLENT**
Symmetry **EXCELLENT**
Fluorescence **NONE**
Inscription(s) **IGI LG807675751**
Comments: This Laboratory Grown Diamond was created by Chemical Vapor Deposition (CVD) growth process.
Type IIa



June 4, 2026
IGI Report No. **LG807675751**
HEXAGONAL MODIFIED BRILLIANT
10.94 X 5.50 X 3.67 MM
1.52 CARAT
Color Grade **E**
Clarity Grade **VS 2**
Depth **66.7%**
Table **60%**
Girdle **Slightly Thick To Thick**
Culet **Pointed**
Polish **EXCELLENT**
Symmetry **EXCELLENT**
Fluorescence **NONE**
Inscription(s) **IGI LG807675751**
Comments: This Laboratory Grown Diamond was created by Chemical Vapor Deposition (CVD) growth process.
Type IIa