



ELECTRONIC COPY

LG807675358
Report verification at igi.org



June 23, 2026
IGI Report Number **LG807675358**
Description **LABORATORY GROWN DIAMOND**
Shape and Cutting Style **SQUARE CUSHION MODIFIED BRILLIANT**
Measurements **5.77 X 5.51 X 3.70 MM**
GRADING RESULTS
Carat Weight **1.03 CARAT**
Color Grade **FANCY VIVID PINK**
Clarity Grade **VS 1**

LABORATORY GROWN DIAMOND REPORT

June 23, 2026
IGI Report Number **LG807675358**
Description **LABORATORY GROWN DIAMOND**
Shape and Cutting Style **SQUARE CUSHION MODIFIED BRILLIANT**
Measurements **5.77 X 5.51 X 3.70 MM**

GRADING RESULTS

Carat Weight **1.03 CARAT**
Color Grade **FANCY VIVID PINK**
Clarity Grade **VS 1**

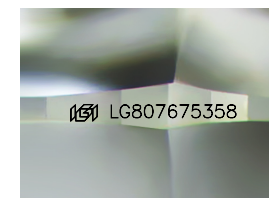
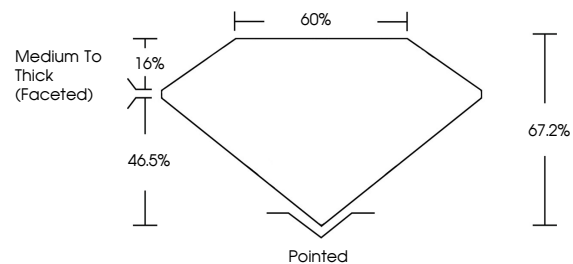
ADDITIONAL GRADING INFORMATION

Polish **EXCELLENT**
Symmetry **VERY GOOD**
Fluorescence **SLIGHT**
Inscription(s) **IGI LG807675358**

Comments: This Laboratory Grown Diamond was created by Chemical Vapor Deposition (CVD) growth process.
Indications of post-growth treatment.

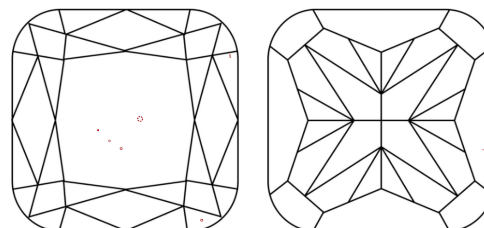
Secondary color: Brown

PROPORTIONS



Sample Image Used

CLARITY CHARACTERISTICS



KEY TO SYMBOLS

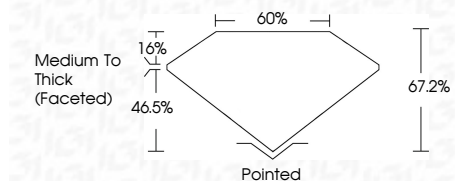
Red symbols indicate internal characteristics.
Green symbols indicate external characteristics.

COLOR

D E F G H I J Faint Very Light Light

CLARITY

FL	IF	VS ¹⁻²	VS ¹⁻²	SI ¹⁻²	I ¹⁻³
Flawless	Internally Flawless	Very Very Slightly Included	Very Slightly Included	Slightly Included	Included



ADDITIONAL GRADING INFORMATION

Polish **EXCELLENT**
Symmetry **VERY GOOD**
Fluorescence **SLIGHT**
Inscription(s) **IGI LG807675358**
Comments: This Laboratory Grown Diamond was created by Chemical Vapor Deposition (CVD) growth process.
Indications of post-growth treatment.
Secondary color: Brown



June 23, 2026
IGI Report No **LG807675358**
SQUARE CUSHION MODIFIED BRILLIANT
5.77 X 5.51 X 3.70 MM
1.03 CARAT
FANCY VIVID PINK
VS 1
67.2%
46.5%
Medium To Thick (Faceted)
Pointed
EXCELLENT
VERY GOOD
SLIGHT
IGI LG807675358

Comments: This Laboratory Grown Diamond was created by Chemical Vapor Deposition (CVD) growth process.
Indications of post-growth treatment.
Secondary color: Brown