



ELECTRONIC COPY

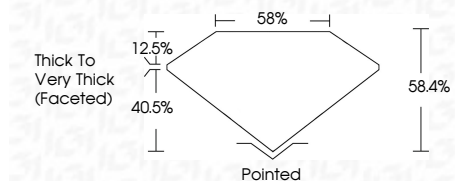
LG807674633
Report verification at igi.org



June 15, 2026
IGI Report Number **LG807674633**
Description **LABORATORY GROWN DIAMOND**

Shape and Cutting Style **PEAR MODIFIED BRILLIANT**
Measurements **9.20 X 5.80 X 3.39 MM**

GRADING RESULTS
Carat Weight **1.25 CARAT**
Color Grade **FANCY VIVID PINK**
Clarity Grade **VS 1**



ADDITIONAL GRADING INFORMATION
Polish **EXCELLENT**
Symmetry **EXCELLENT**
Fluorescence **STRONG**
Inscription(s) **(IGI) LG807674633**
Comments: This Laboratory Grown Diamond was created by Chemical Vapor Deposition (CVD) growth process. Indications of post-growth treatment.



June 15, 2026
IGI Report No LG807674633
PEAR MODIFIED BRILLIANT
9.20 X 5.80 X 3.39 MM
1.25 CARAT
FANCY VIVID PINK
VS 1
58.4%
40.5%
Thick to Very Thick (Faceted)
Pointed
EXCELLENT
EXCELLENT
STRONG
(IGI) LG807674633
Comments: This Laboratory Grown Diamond was created by Chemical Vapor Deposition (CVD) growth process. Indications of post-growth treatment.

LABORATORY GROWN DIAMOND REPORT

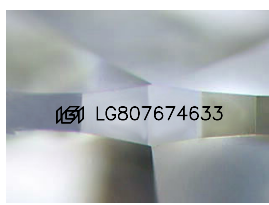
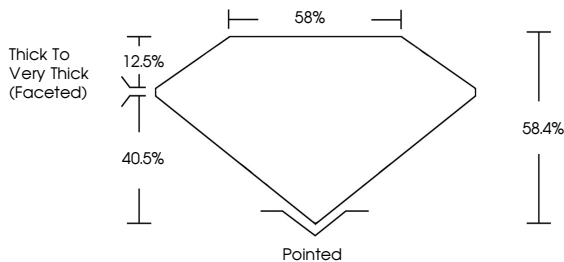
June 15, 2026
IGI Report Number **LG807674633**
Description **LABORATORY GROWN DIAMOND**
Shape and Cutting Style **PEAR MODIFIED BRILLIANT**
Measurements **9.20 X 5.80 X 3.39 MM**

GRADING RESULTS
Carat Weight **1.25 CARAT**
Color Grade **FANCY VIVID PINK**
Clarity Grade **VS 1**

ADDITIONAL GRADING INFORMATION
Polish **EXCELLENT**
Symmetry **EXCELLENT**
Fluorescence **STRONG**
Inscription(s) **(IGI) LG807674633**

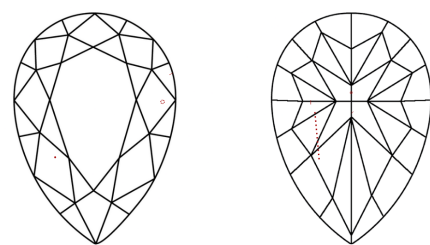
Comments: This Laboratory Grown Diamond was created by Chemical Vapor Deposition (CVD) growth process. Indications of post-growth treatment.

PROPORTIONS



Sample Image Used

CLARITY CHARACTERISTICS



KEY TO SYMBOLS
Red symbols indicate internal characteristics.
Green symbols indicate external characteristics.

COLOR

D	E	F	G	H	I	J	Faint	Very Light	Light
---	---	---	---	---	---	---	-------	------------	-------

CLARITY

FL	IF	VS ¹⁻²	VS ¹⁻²	SI ¹⁻²	I ¹⁻³
Flawless	Internally Flawless	Very Very Slightly Included	Very Slightly Included	Slightly Included	Included

