



ELECTRONIC COPY

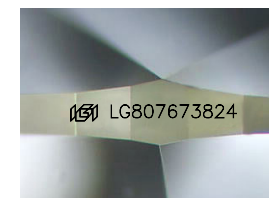
LG807673824
Report verification at igi.org



June 25, 2026
IGI Report Number **LG807673824**
Description **LABORATORY GROWN DIAMOND**

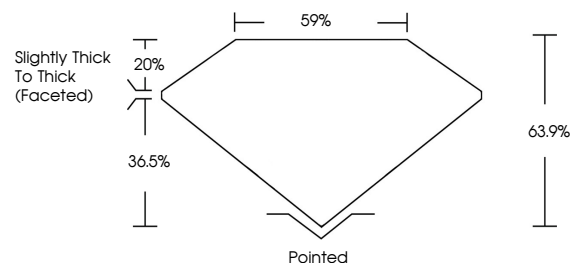
Shape and Cutting Style **PEAR MODIFIED BRILLIANT**
Measurements **8.25 X 5.48 X 3.50 MM**

GRADING RESULTS
Carat Weight **1.15 CARAT**
Color Grade **FANCY INTENSE YELLOW**
Clarity Grade **VVS 2**

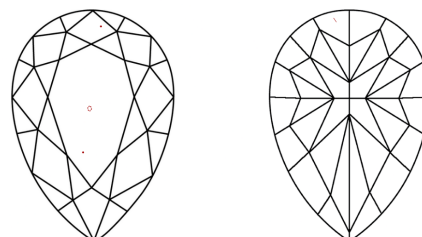


Sample Image Used

PROPORTIONS



CLARITY CHARACTERISTICS



KEY TO SYMBOLS

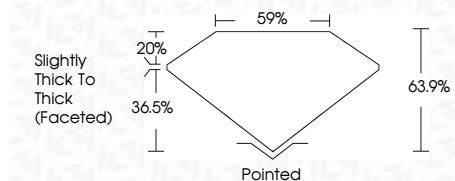
Red symbols indicate internal characteristics.
Green symbols indicate external characteristics.

COLOR

D E F G H I J Faint Very Light Light

CLARITY

FL	IF	VVS ¹⁻²	VS ¹⁻²	SI ¹⁻²	I ¹⁻³
Flawless	Internally Flawless	Very Very Slightly Included	Very Slightly Included	Slightly Included	Included



ADDITIONAL GRADING INFORMATION

Polish **EXCELLENT**
Symmetry **EXCELLENT**
Fluorescence **NONE**
Inscription(s) **IGI LG807673824**
Comments: This Laboratory Grown Diamond was created by Chemical Vapor Deposition (CVD) growth process.



June 25, 2026
IGI Report No. **LG807673824**
PEAR MODIFIED BRILLIANT
8.25 X 5.48 X 3.50 MM
1.15 CARAT
Color Grade **FANCY INTENSE YELLOW**
Clarity Grade **VVS 2**
Depth **63.9%**
Table **59%**
Girdle **Slightly Thick To Thick (Faceted)**
Culet **Pointed**
Polish **EXCELLENT**
Symmetry **EXCELLENT**
Fluorescence **NONE**
Inscription(s) **IGI LG807673824**

Comments: This Laboratory Grown Diamond was created by Chemical Vapor Deposition (CVD) growth process.