



**ELECTRONIC COPY**

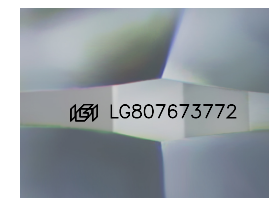
LG807673772  
Report verification at igi.org



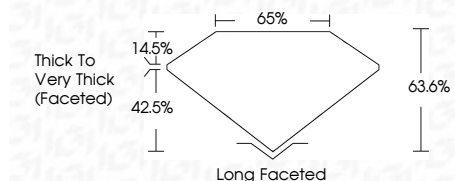
June 25, 2026  
IGI Report Number **LG807673772**  
Description **LABORATORY GROWN DIAMOND**  
Shape and Cutting Style **CUSHION BRILLIANT**  
Measurements **7.51 X 6.16 X 3.92 MM**

**GRADING RESULTS**

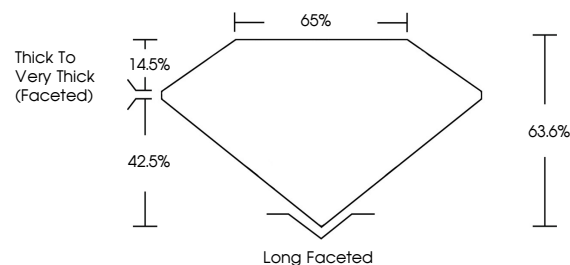
Carat Weight **1.50 CARAT**  
Color Grade **I**  
Clarity Grade **VS 1**



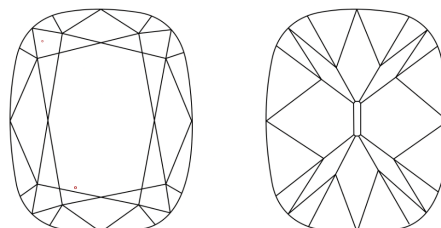
Sample Image Used



**PROPORTIONS**



**CLARITY CHARACTERISTICS**



**KEY TO SYMBOLS**

Red symbols indicate internal characteristics.  
Green symbols indicate external characteristics.

**COLOR**

D E F G H I J Faint Very Light Light

**CLARITY**

FL	IF	VS <sup>1-2</sup>	VS <sup>1-2</sup>	SI <sup>1-2</sup>	I <sup>1-3</sup>
Flawless	Internally Flawless	Very Very Slightly Included	Very Slightly Included	Slightly Included	Included

**ADDITIONAL GRADING INFORMATION**

Polish **EXCELLENT**  
Symmetry **EXCELLENT**  
Fluorescence **NONE**  
Inscription(s) **IGI LG807673772**  
Comments: This Laboratory Grown Diamond was created by Chemical Vapor Deposition (CVD) growth process. Type IIa



June 25, 2026  
IGI Report No LG807673772  
CUSHION BRILLIANT  
7.51 X 6.16 X 3.92 MM  
1.50 CARAT  
Color Grade I  
Clarity Grade VS 1  
Depth 63.6%  
Table 65%  
Girdle Thick to Very Thick (Faceted)  
Culet Long Faceted  
Polish EXCELLENT  
Symmetry EXCELLENT  
Fluorescence NONE  
Inscription(s) IGI LG807673772  
Comments: This Laboratory Grown Diamond was created by Chemical Vapor Deposition (CVD) growth process. Type IIa