



ELECTRONIC COPY

LG807673728
Report verification at igi.org



June 24, 2026
IGI Report Number **LG807673728**
Description **LABORATORY GROWN DIAMOND**
Shape and Cutting Style **PEAR MODIFIED BRILLIANT**
Measurements **8.12 X 5.34 X 3.53 MM**
GRADING RESULTS
Carat Weight **1.08 CARAT**
Color Grade **FANCY INTENSE YELLOW**
Clarity Grade **VVS 2**

June 24, 2026
IGI Report Number **LG807673728**
Description **LABORATORY GROWN DIAMOND**
Shape and Cutting Style **PEAR MODIFIED BRILLIANT**
Measurements **8.12 X 5.34 X 3.53 MM**

GRADING RESULTS

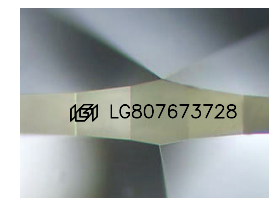
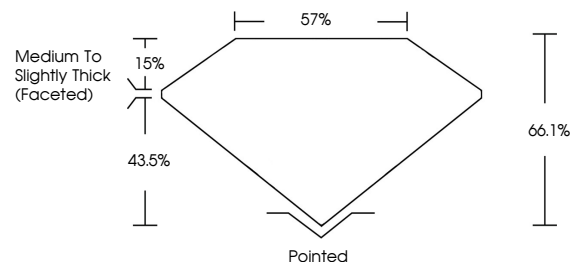
Carat Weight **1.08 CARAT**
Color Grade **FANCY INTENSE YELLOW**
Clarity Grade **VVS 2**

ADDITIONAL GRADING INFORMATION

Polish **VERY GOOD**
Symmetry **VERY GOOD**
Fluorescence **NONE**
Inscription(s) **IGI LG807673728**

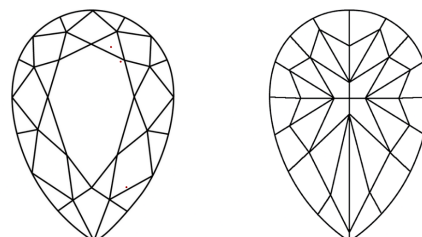
Comments: This Laboratory Grown Diamond was created by Chemical Vapor Deposition (CVD) growth process.

PROPORTIONS



Sample Image Used

CLARITY CHARACTERISTICS



KEY TO SYMBOLS

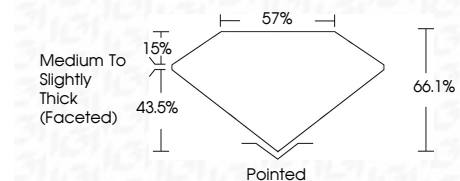
Red symbols indicate internal characteristics.
Green symbols indicate external characteristics.

COLOR

D E F G H I J Faint Very Light Light

CLARITY

FL	IF	VVS ¹⁻²	VS ¹⁻²	SI ¹⁻²	I ¹⁻³
Flawless	Internally Flawless	Very Very Slightly Included	Very Slightly Included	Slightly Included	Included



ADDITIONAL GRADING INFORMATION

Polish **VERY GOOD**
Symmetry **VERY GOOD**
Fluorescence **NONE**
Inscription(s) **IGI LG807673728**
Comments: This Laboratory Grown Diamond was created by Chemical Vapor Deposition (CVD) growth process.



IGI



June 24, 2026
IGI Report No. **LG807673728**
PEAR MODIFIED BRILLIANT
8.12 X 5.34 X 3.53 MM
Carat Weight **1.08 CARAT**
Color Grade **FANCY INTENSE YELLOW**
Clarity Grade **VVS 2**
Depth **66.1%**
Table **57%**
Girdle **Medium to Slightly Thick (Faceted)**
Culet **Pointed**
Polish **VERY GOOD**
Symmetry **VERY GOOD**
Fluorescence **NONE**
Inscription(s) **IGI LG807673728**
Comments: This Laboratory Grown Diamond was created by Chemical Vapor Deposition (CVD) growth process.