



ELECTRONIC COPY

LG807673611
Report verification at igi.org



June 11, 2026

IGI Report Number LG807673611

Description LABORATORY GROWN DIAMOND

Shape and Cutting Style CUT CORNERED RECTANGULAR MODIFIED BRILLIANT

Measurements 8.96 X 5.75 X 3.57 MM

GRADING RESULTS

Carat Weight 1.57 CARAT

Color Grade F

Clarity Grade VS 1

LABORATORY GROWN DIAMOND REPORT

June 11, 2026

IGI Report Number LG807673611

Description LABORATORY GROWN DIAMOND

Shape and Cutting Style CUT CORNERED RECTANGULAR MODIFIED BRILLIANT

Measurements 8.96 X 5.75 X 3.57 MM

GRADING RESULTS

Carat Weight 1.57 CARAT

Color Grade F

Clarity Grade VS 1

ADDITIONAL GRADING INFORMATION

Polish EXCELLENT

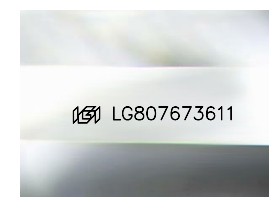
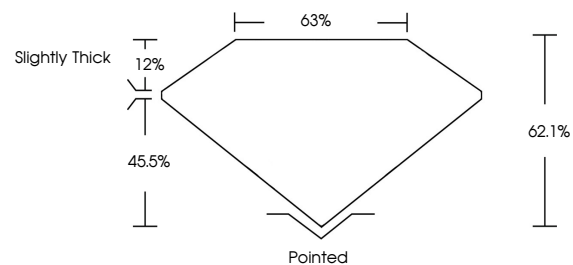
Symmetry EXCELLENT

Fluorescence NONE

Inscription(s) LG807673611

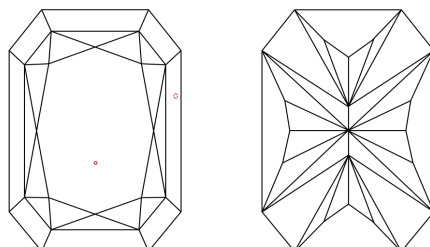
Comments: This Laboratory Grown Diamond was created by Chemical Vapor Deposition (CVD) growth process. Type IIa

PROPORTIONS



Sample Image Used

CLARITY CHARACTERISTICS



KEY TO SYMBOLS

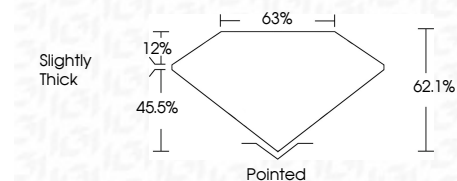
Red symbols indicate internal characteristics. Green symbols indicate external characteristics.

COLOR

D E F G H I J Faint Very Light Light

CLARITY

FL IF VS 1-2 VS 2-2 SI 1-2 I 1-3
Flawless Internally Flawless Very Very Slightly Included Very Slightly Included Slightly Included Included



ADDITIONAL GRADING INFORMATION

Polish EXCELLENT

Symmetry EXCELLENT

Fluorescence NONE

Inscription(s) LG807673611

Comments: This Laboratory Grown Diamond was created by Chemical Vapor Deposition (CVD) growth process. Type IIa



June 11, 2026
IGI Report No. LG807673611
CUT CORNERED RECT. MODIFIED BRILLIANT
8.96 X 5.75 X 3.57 MM
1.57 CARAT
Color Grade F
Clarity Grade VS 1
Table 63%
Depth 62.1%
Girdle Slightly Thick
Culet Pointed
Polish EXCELLENT
Symmetry EXCELLENT
Fluorescence NONE
Inscription(s) LG807673611
Comments: This Laboratory Grown Diamond was created by Chemical Vapor Deposition (CVD) growth process. Type IIa