



LABORATORY GROWN DIAMOND REPORT

June 10, 2026
IGI Report Number **LG807673552**
Description **LABORATORY GROWN DIAMOND**
Shape and Cutting Style **HEART MODIFIED BRILLIANT**
Measurements **5.42 X 6.51 X 3.47 MM**

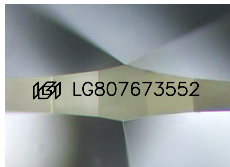
GRADING RESULTS

Carat Weight **0.91 CARAT**
Color Grade **FANCY INTENSE PINK**
Clarity Grade **VS 2**

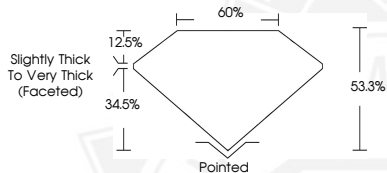
ADDITIONAL GRADING INFORMATION

Polish **EXCELLENT**
Symmetry **EXCELLENT**
Fluorescence **SLIGHT**
Inscription(s) **IGI LG807673552**

Comments: This Laboratory Grown Diamond was created by Chemical Vapor Deposition (CVD) growth process. Indications of post-growth treatment.



Sample Image Used



June 10, 2026

IGI Report Number **LG807673552**
HEART MODIFIED BRILLIANT
LABORATORY GROWN DIAMOND
5.42 X 6.51 X 3.47 MM

Carat Weight **0.91 CARAT**
Color Grade **FANCY INTENSE PINK**
Clarity Grade **VS 2**
Polish **EXCELLENT**
Symmetry **EXCELLENT**
Fluorescence **SLIGHT**
Inscription(s) **IGI LG807673552**

Comments: This Laboratory Grown Diamond was created by Chemical Vapor Deposition (CVD) growth process. Indications of post-growth treatment.



June 10, 2026

IGI Report Number **LG807673552**
HEART MODIFIED BRILLIANT
LABORATORY GROWN DIAMOND
5.42 X 6.51 X 3.47 MM

Carat Weight **0.91 CARAT**
Color Grade **FANCY INTENSE PINK**
Clarity Grade **VS 2**
Polish **EXCELLENT**
Symmetry **EXCELLENT**
Fluorescence **SLIGHT**
Inscription(s) **IGI LG807673552**

Comments: This Laboratory Grown Diamond was created by Chemical Vapor Deposition (CVD) growth process. Indications of post-growth treatment.



THIS DOCUMENT WAS PRODUCED WITH THE FOLLOWING SECURITY MEASURES: SPECIAL DOCUMENT PAPER, INK SCREENS, WATERMARK, BACKGROUND DESIGNS, HOLOGRAM AND OTHER SECURITY FEATURES NOT LISTED AND DO EXCEED DOCUMENT SECURITY INDUSTRY GUIDELINES.