



**ELECTRONIC COPY**

LG807673541  
Report verification at igi.org



June 11, 2026  
IGI Report Number **LG807673541**  
Description **LABORATORY GROWN DIAMOND**  
Shape and Cutting Style **CUSHION MODIFIED BRILLIANT**  
Measurements **11.94 X 8.21 X 5.48 MM**  
**GRADING RESULTS**  
Carat Weight **5.00 CARATS**  
Color Grade **FANCY INTENSE PINK**  
Clarity Grade **SI 1**

June 11, 2026  
IGI Report Number **LG807673541**  
Description **LABORATORY GROWN DIAMOND**  
Shape and Cutting Style **CUSHION MODIFIED BRILLIANT**  
Measurements **11.94 X 8.21 X 5.48 MM**

**GRADING RESULTS**

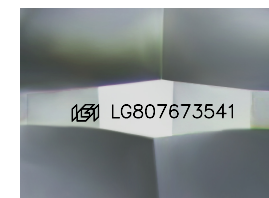
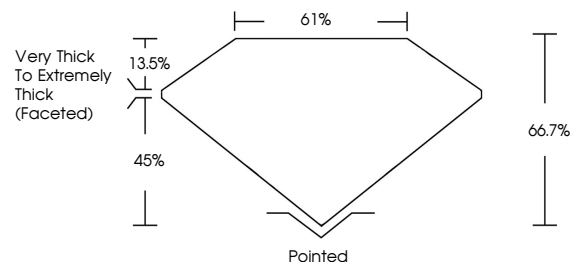
Carat Weight **5.00 CARATS**  
Color Grade **FANCY INTENSE PINK**  
Clarity Grade **SI 1**

**ADDITIONAL GRADING INFORMATION**

Polish **EXCELLENT**  
Symmetry **EXCELLENT**  
Fluorescence **SLIGHT**  
Inscription(s) **IGI LG807673541**

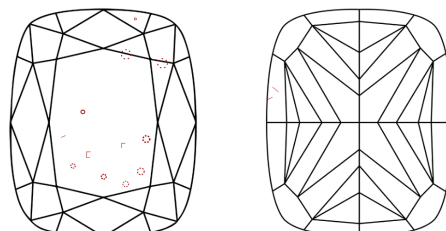
Comments: This Laboratory Grown Diamond was created by Chemical Vapor Deposition (CVD) growth process.  
Indications of post-growth treatment.

**PROPORTIONS**



Sample Image Used

**CLARITY CHARACTERISTICS**



**KEY TO SYMBOLS**

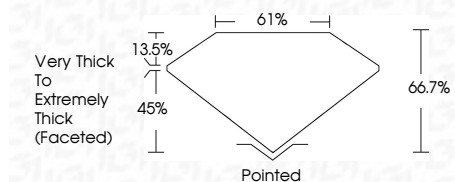
Red symbols indicate internal characteristics.  
Green symbols indicate external characteristics.

**COLOR**

D E F G H I J Faint Very Light Light

**CLARITY**

FL	IF	VS <sup>1-2</sup>	VS <sup>1-2</sup>	SI <sup>1-2</sup>	I <sup>1-3</sup>
Flawless	Internally Flawless	Very Very Slightly Included	Very Slightly Included	Slightly Included	Included



**ADDITIONAL GRADING INFORMATION**

Polish **EXCELLENT**  
Symmetry **EXCELLENT**  
Fluorescence **SLIGHT**  
Inscription(s) **IGI LG807673541**  
Comments: This Laboratory Grown Diamond was created by Chemical Vapor Deposition (CVD) growth process.  
Indications of post-growth treatment.



June 11, 2026  
IGI Report No LG807673541  
CUSHION MODIFIED BRILLIANT  
11.94 X 8.21 X 5.48 MM  
5.00 CARATS  
FANCY INTENSE PINK  
SI 1  
66.7%  
61%  
Very Thick to Extremely Thick (Faceted)  
Pointed  
EXCELLENT  
EXCELLENT  
SLIGHT  
IGI LG807673541  
Comments: This Laboratory Grown Diamond was created by Chemical Vapor Deposition (CVD) growth process.  
Indications of post-growth treatment.