



**ELECTRONIC COPY**

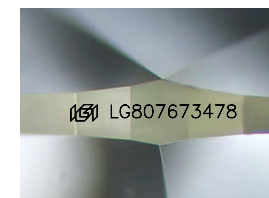
LG807673478  
Report verification at igi.org



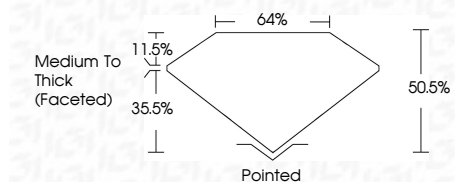
June 11, 2026  
IGI Report Number **LG807673478**  
Description **LABORATORY GROWN DIAMOND**  
Shape and Cutting Style **HEART MODIFIED BRILLIANT**  
Measurements **6.04 X 7.01 X 3.54 MM**

**GRADING RESULTS**

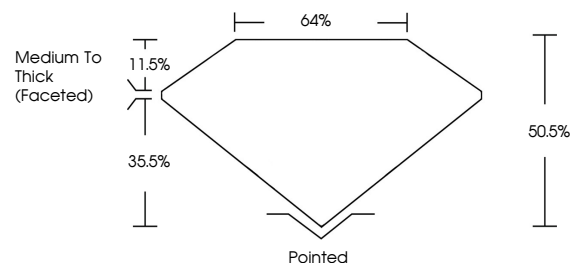
Carat Weight **1.06 CARAT**  
Color Grade **FANCY PINK**  
Clarity Grade **VS 2**



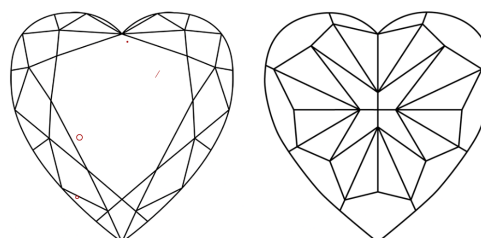
Sample Image Used



**PROPORTIONS**



**CLARITY CHARACTERISTICS**



**KEY TO SYMBOLS**

Red symbols indicate internal characteristics.  
Green symbols indicate external characteristics.

**COLOR**

D E F G H I J Faint Very Light Light

**CLARITY**

| FL       | IF                  | VS <sup>1-2</sup>           | VS <sup>1-2</sup>      | SI <sup>1-2</sup> | I <sup>1-3</sup> |
|----------|---------------------|-----------------------------|------------------------|-------------------|------------------|
| Flawless | Internally Flawless | Very Very Slightly Included | Very Slightly Included | Slightly Included | Included         |

**ADDITIONAL GRADING INFORMATION**

Polish **EXCELLENT**  
Symmetry **EXCELLENT**  
Fluorescence **SLIGHT**  
Inscription(s) **IGI LG807673478**

Comments: This Laboratory Grown Diamond was created by Chemical Vapor Deposition (CVD) growth process. Indications of post-growth treatment.



June 11, 2026  
IGI Report No **LG807673478**  
**HEART MODIFIED BRILLIANT**  
6.04 X 7.01 X 3.54 MM  
Carat Weight **1.06 CARAT**  
Color Grade **FANCY PINK**  
Clarity Grade **VS 2**  
Table **60.6%**  
Girdle **4/5%**  
Culet **Medium To Thick (Faceted)**  
Polish **Pointed**  
Symmetry **EXCELLENT**  
Fluorescence **EXCELLENT**  
Inscription(s) **SLIGHT**  
**IGI LG807673478**

Comments: This Laboratory Grown Diamond was created by Chemical Vapor Deposition (CVD) growth process. Indications of post-growth treatment.