



**ELECTRONIC COPY**

LG807673472  
Report verification at igi.org



June 12, 2026  
IGI Report Number **LG807673472**  
Description **LABORATORY GROWN DIAMOND**  
Shape and Cutting Style **CUSHION BRILLIANT**  
Measurements **9.87 X 6.45 X 3.96 MM**  
**GRADING RESULTS**  
Carat Weight **2.02 CARATS**  
Color Grade **FANCY INTENSE BLUE**  
Clarity Grade **SI 1**

**LABORATORY GROWN DIAMOND REPORT**

June 12, 2026  
IGI Report Number **LG807673472**  
Description **LABORATORY GROWN DIAMOND**  
Shape and Cutting Style **CUSHION BRILLIANT**  
Measurements **9.87 X 6.45 X 3.96 MM**

**GRADING RESULTS**

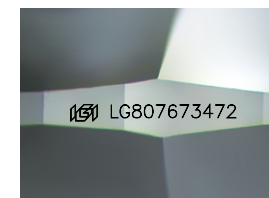
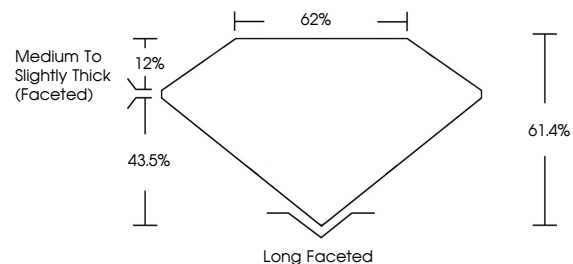
Carat Weight **2.02 CARATS**  
Color Grade **FANCY INTENSE BLUE**  
Clarity Grade **SI 1**

**ADDITIONAL GRADING INFORMATION**

Polish **EXCELLENT**  
Symmetry **EXCELLENT**  
Fluorescence **NONE**  
Inscription(s) **IGI LG807673472**

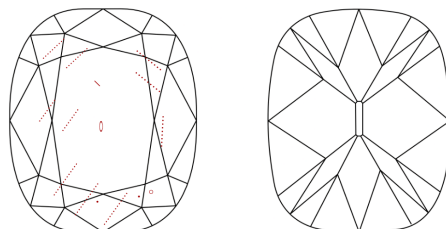
Comments: This Laboratory Grown Diamond was created by Chemical Vapor Deposition (CVD) growth process.  
Indications of post-growth treatment.

**PROPORTIONS**



Sample Image Used

**CLARITY CHARACTERISTICS**



**KEY TO SYMBOLS**

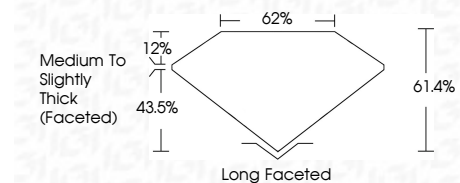
Red symbols indicate internal characteristics.  
Green symbols indicate external characteristics.

**COLOR**

D E F G H I J Faint Very Light Light

**CLARITY**

FL	IF	VS <sup>1-2</sup>	VS <sup>1-2</sup>	SI <sup>1-2</sup>	I <sup>1-3</sup>
Flawless	Internally Flawless	Very Very Slightly Included	Very Slightly Included	Slightly Included	Included



**ADDITIONAL GRADING INFORMATION**

Polish **EXCELLENT**  
Symmetry **EXCELLENT**  
Fluorescence **NONE**  
Inscription(s) **IGI LG807673472**  
Comments: This Laboratory Grown Diamond was created by Chemical Vapor Deposition (CVD) growth process.  
Indications of post-growth treatment.



June 12, 2026  
IGI Report No LG807673472  
**CUSHION BRILLIANT**  
9.87 X 6.45 X 3.96 MM  
2.02 CARATS  
FANCY INTENSE BLUE  
SI 1  
61.4%  
62%  
Medium to Slightly Thick (Faceted)  
Long Faceted  
EXCELLENT  
EXCELLENT  
NONE  
IGI LG807673472  
Comments: This Laboratory Grown Diamond was created by Chemical Vapor Deposition (CVD) growth process.  
Indications of post-growth treatment.