



ELECTRONIC COPY

LG807673452
Report verification at igi.org



June 10, 2026
IGI Report Number LG807673452
Description LABORATORY GROWN DIAMOND
Shape and Cutting Style CUT CORNERED RECTANGULAR MODIFIED BRILLIANT
Measurements 7.96 X 6.05 X 4.34 MM
GRADING RESULTS
Carat Weight 2.00 CARATS
Color Grade FANCY INTENSE PINK
Clarity Grade SI 1

LABORATORY GROWN DIAMOND REPORT

June 10, 2026
IGI Report Number LG807673452
Description LABORATORY GROWN DIAMOND
Shape and Cutting Style CUT CORNERED RECTANGULAR MODIFIED BRILLIANT
Measurements 7.96 X 6.05 X 4.34 MM

GRADING RESULTS

Carat Weight 2.00 CARATS
Color Grade FANCY INTENSE PINK
Clarity Grade SI 1

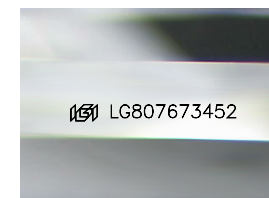
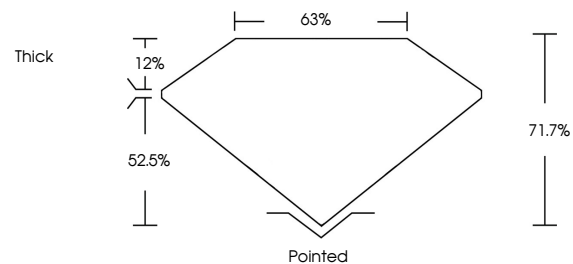
ADDITIONAL GRADING INFORMATION

Polish EXCELLENT
Symmetry EXCELLENT
Fluorescence SLIGHT
Inscription(s) LG807673452

Comments: This Laboratory Grown Diamond was created by Chemical Vapor Deposition (CVD) growth process.
Indications of post-growth treatment.

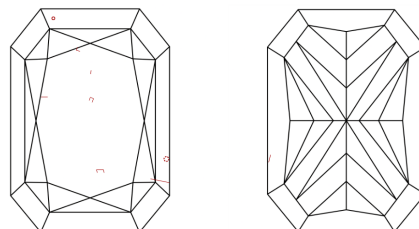
Secondary color: Brown

PROPORTIONS



Sample Image Used

CLARITY CHARACTERISTICS



KEY TO SYMBOLS

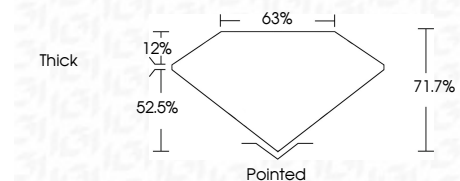
Red symbols indicate internal characteristics.
Green symbols indicate external characteristics.

COLOR

D E F G H I J Faint Very Light Light

CLARITY

FL IF VS 1-2 VS 1-2 SI 1-2 I 1-3
Flawless Internally Flawless Very Very Slightly Included Very Slightly Included Slightly Included Included



ADDITIONAL GRADING INFORMATION

Polish EXCELLENT
Symmetry EXCELLENT
Fluorescence SLIGHT
Inscription(s) LG807673452
Comments: This Laboratory Grown Diamond was created by Chemical Vapor Deposition (CVD) growth process.
Indications of post-growth treatment.
Secondary color: Brown



June 10, 2026
IGI Report No LG807673452
CUT CORNERED RECT. MODIFIED BRILLIANT
7.96 X 6.05 X 4.34 MM
2.00 CARATS
FANCY INTENSE PINK
SI 1
71.7%
63%
Thick
Pointed
EXCELLENT
EXCELLENT
SLIGHT
LG807673452
Comments: This Laboratory Grown Diamond was created by Chemical Vapor Deposition (CVD) growth process.
Indications of post-growth treatment.
Secondary color: Brown