



ELECTRONIC COPY

LG807673450
Report verification at igi.org



June 10, 2026
IGI Report Number LG807673450
Description LABORATORY GROWN DIAMOND
Shape and Cutting Style CUT CORNERED RECTANGULAR MODIFIED BRILLIANT
Measurements 8.65 X 6.14 X 4.05 MM
GRADING RESULTS
Carat Weight 2.01 CARATS
Color Grade FANCY INTENSE PINK
Clarity Grade VS 2

LABORATORY GROWN DIAMOND REPORT

June 10, 2026
IGI Report Number LG807673450
Description LABORATORY GROWN DIAMOND
Shape and Cutting Style CUT CORNERED RECTANGULAR MODIFIED BRILLIANT
Measurements 8.65 X 6.14 X 4.05 MM

GRADING RESULTS

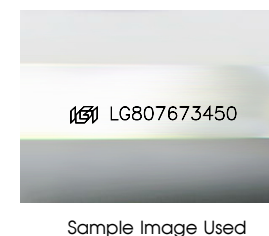
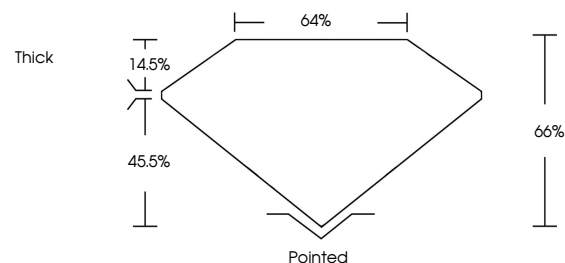
Carat Weight 2.01 CARATS
Color Grade FANCY INTENSE PINK
Clarity Grade VS 2

ADDITIONAL GRADING INFORMATION

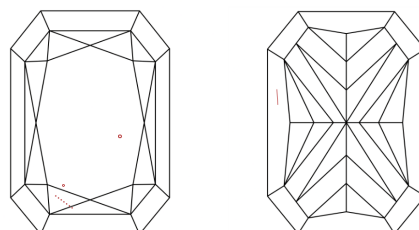
Polish EXCELLENT
Symmetry EXCELLENT
Fluorescence SLIGHT
Inscription(s) LG807673450

Comments: This Laboratory Grown Diamond was created by Chemical Vapor Deposition (CVD) growth process.
Indications of post-growth treatment.

PROPORTIONS



CLARITY CHARACTERISTICS



KEY TO SYMBOLS

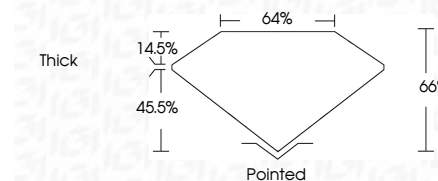
Red symbols indicate internal characteristics.
Green symbols indicate external characteristics.

COLOR

D E F G H I J Faint Very Light Light

CLARITY

FL IF VS 1-2 VS 1-2 SI 1-2 I 1-3
Flawless Internally Flawless Very Very Slightly Included Very Slightly Included Slightly Included Included



ADDITIONAL GRADING INFORMATION

Polish EXCELLENT
Symmetry EXCELLENT
Fluorescence SLIGHT
Inscription(s) LG807673450
Comments: This Laboratory Grown Diamond was created by Chemical Vapor Deposition (CVD) growth process.
Indications of post-growth treatment.



June 10, 2026
IGI Report No LG807673450
CUT CORNERED RECT. MODIFIED BRILLIANT
8.65 X 6.14 X 4.05 MM
2.01 CARATS
FANCY INTENSE PINK
VS 2
66%
64%
Thick
Pointed
EXCELLENT
EXCELLENT
SLIGHT
LG807673450
Comments: This Laboratory Grown Diamond was created by Chemical Vapor Deposition (CVD) growth process.
Indications of post-growth treatment.