



ELECTRONIC COPY

LG807673446
Report verification at igi.org



June 10, 2026
IGI Report Number LG807673446
Description LABORATORY GROWN DIAMOND
Shape and Cutting Style CUSHION MODIFIED BRILLIANT
Measurements 7.18 X 5.38 X 3.38 MM
GRADING RESULTS
Carat Weight 1.15 CARAT
Color Grade FANCY PINK
Clarity Grade VVS 2

LABORATORY GROWN DIAMOND REPORT

June 10, 2026
IGI Report Number LG807673446
Description LABORATORY GROWN DIAMOND
Shape and Cutting Style CUSHION MODIFIED BRILLIANT
Measurements 7.18 X 5.38 X 3.38 MM

GRADING RESULTS

Carat Weight 1.15 CARAT
Color Grade FANCY PINK
Clarity Grade VVS 2

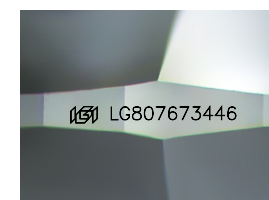
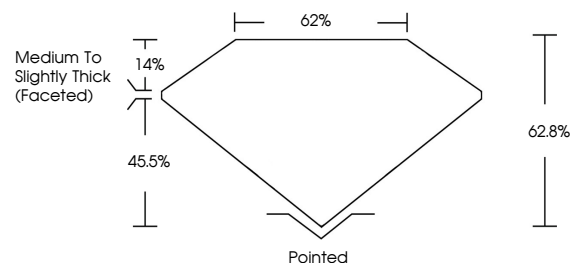
ADDITIONAL GRADING INFORMATION

Polish EXCELLENT
Symmetry EXCELLENT
Fluorescence SLIGHT
Inscription(s) IGI LG807673446

Comments: This Laboratory Grown Diamond was created by Chemical Vapor Deposition (CVD) growth process.
Indications of post-growth treatment.

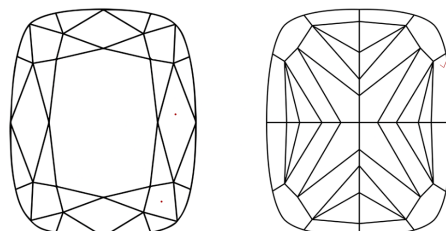
Secondary color: Brown

PROPORTIONS



Sample Image Used

CLARITY CHARACTERISTICS



KEY TO SYMBOLS

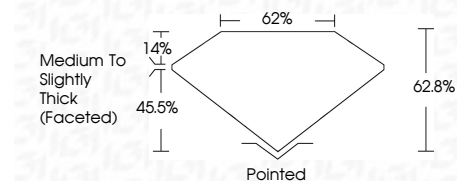
Red symbols indicate internal characteristics.
Green symbols indicate external characteristics.

COLOR

D E F G H I J Faint Very Light Light

CLARITY

FL IF VVS 1-2 VS 1-2 SI 1-2 I 1-3
Flawless Internally Flawless Very Very Slightly Included Very Slightly Included Slightly Included Included



ADDITIONAL GRADING INFORMATION

Polish EXCELLENT
Symmetry EXCELLENT
Fluorescence SLIGHT
Inscription(s) IGI LG807673446
Comments: This Laboratory Grown Diamond was created by Chemical Vapor Deposition (CVD) growth process.
Indications of post-growth treatment.
Secondary color: Brown



June 10, 2026
IGI Report No LG807673446
CUSHION MODIFIED BRILLIANT
7.18 X 5.38 X 3.38 MM
1.15 CARAT
FANCY PINK
VVS 2
62.0%
62%
Medium to Slightly Thick (Faceted)
Pointed
EXCELLENT
EXCELLENT
SLIGHT
IGI LG807673446
Comments: This Laboratory Grown Diamond was created by Chemical Vapor Deposition (CVD) growth process.
Indications of post-growth treatment.
Secondary color: Brown