



ELECTRONIC COPY

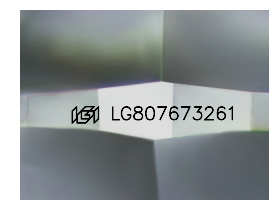
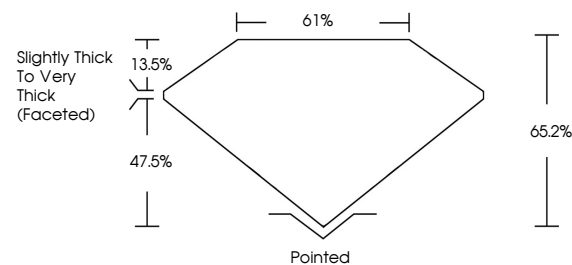
LG807673261
Report verification at igi.org



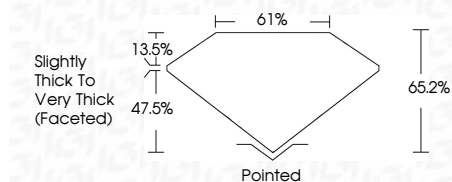
June 17, 2026
IGI Report Number **LG807673261**
Description **LABORATORY GROWN DIAMOND**
Shape and Cutting Style **SQUARE CUSHION MODIFIED BRILLIANT**
Measurements **6.96 X 6.95 X 4.53 MM**
GRADING RESULTS
Carat Weight **1.75 CARAT**
Color Grade **D**
Clarity Grade **VVS 2**

June 17, 2026
IGI Report Number **LG807673261**
Description **LABORATORY GROWN DIAMOND**
Shape and Cutting Style **SQUARE CUSHION MODIFIED BRILLIANT**
Measurements **6.96 X 6.95 X 4.53 MM**

PROPORTIONS



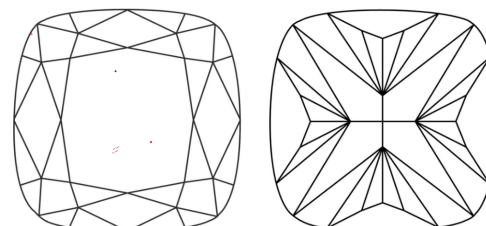
Sample Image Used



GRADING RESULTS

Carat Weight **1.75 CARAT**
Color Grade **D**
Clarity Grade **VVS 2**

CLARITY CHARACTERISTICS



KEY TO SYMBOLS

Red symbols indicate internal characteristics.
Green symbols indicate external characteristics.

COLOR

D E F G H I J Faint Very Light Light

CLARITY

FL	IF	VVS ¹⁻²	VS ¹⁻²	SI ¹⁻²	I ¹⁻³
Flawless	Internally Flawless	Very Very Slightly Included	Very Slightly Included	Slightly Included	Included

ADDITIONAL GRADING INFORMATION

Polish **VERY GOOD**
Symmetry **EXCELLENT**
Fluorescence **NONE**
Inscription(s) **IGI LG807673261**
Comments: This Laboratory Grown Diamond was created by Chemical Vapor Deposition (CVD) growth process. Type IIa

ADDITIONAL GRADING INFORMATION

Polish **VERY GOOD**
Symmetry **EXCELLENT**
Fluorescence **NONE**
Inscription(s) **IGI LG807673261**

Comments: This Laboratory Grown Diamond was created by Chemical Vapor Deposition (CVD) growth process. Type IIa



IGI

June 17, 2026
IGI Report No. LG807673261
SQUARE CUSHION MODIFIED BRILLIANT
6.96 X 6.95 X 4.53 MM
Carat Weight **1.75 CARAT**
Color Grade **D**
Clarity Grade **VVS 2**
Depth **65.2%**
Table **61%**
Girdle **Slightly Thick To Very Thick (Faceted)**
Culet **Pointed**
Polish **VERY GOOD**
Symmetry **EXCELLENT**
Fluorescence **NONE**
Inscription(s) **IGI LG807673261**

Comments: This Laboratory Grown Diamond was created by Chemical Vapor Deposition (CVD) growth process. Type IIa