



ELECTRONIC COPY

LG807672288
Report verification at igi.org



June 11, 2026
IGI Report Number **LG807672288**
Description **LABORATORY GROWN DIAMOND**
Shape and Cutting Style **CUT CORNERED
RECTANGULAR MIXED CUT**
Measurements **8.72 X 6.74 X 4.64 MM**
GRADING RESULTS
Carat Weight **2.62 CARATS**
Color Grade **FANCY INTENSE YELLOW**
Clarity Grade **VVS 2**

LABORATORY GROWN DIAMOND REPORT

June 11, 2026
IGI Report Number **LG807672288**
Description **LABORATORY GROWN DIAMOND**
Shape and Cutting Style **CUT CORNERED RECTANGULAR
MIXED CUT**
Measurements **8.72 X 6.74 X 4.64 MM**

GRADING RESULTS

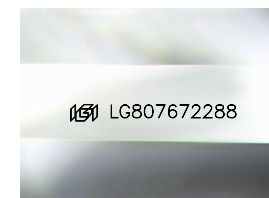
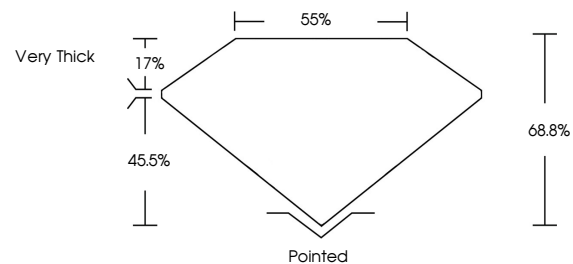
Carat Weight **2.62 CARATS**
Color Grade **FANCY INTENSE YELLOW**
Clarity Grade **VVS 2**

ADDITIONAL GRADING INFORMATION

Polish **EXCELLENT**
Symmetry **EXCELLENT**
Fluorescence **NONE**
Inscription(s) **IGI LG807672288**

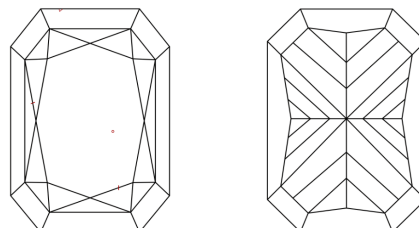
Comments: This Laboratory Grown Diamond was created by Chemical Vapor Deposition (CVD) growth process.

PROPORTIONS



Sample Image Used

CLARITY CHARACTERISTICS



KEY TO SYMBOLS

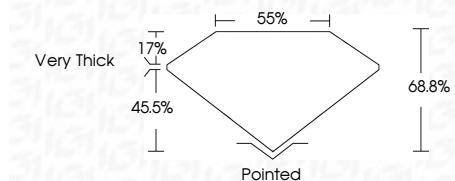
Red symbols indicate internal characteristics.
Green symbols indicate external characteristics.

COLOR

D E F G H I J Faint Very Light Light

CLARITY

FL	IF	VVS ¹⁻²	VS ¹⁻²	SI ¹⁻²	I ¹⁻³
Flawless	Internally Flawless	Very Very Slightly Included	Very Slightly Included	Slightly Included	Included



ADDITIONAL GRADING INFORMATION

Polish **EXCELLENT**
Symmetry **EXCELLENT**
Fluorescence **NONE**
Inscription(s) **IGI LG807672288**
Comments: This Laboratory Grown Diamond was created by Chemical Vapor Deposition (CVD) growth process.



June 11, 2026
IGI Report No LG807672288
CUT CORNERED RECT. MIXED CUT
2.62 CARATS
FANCY INTENSE YELLOW
VVS 2
8.72 X 6.74 X 4.64 MM
Color Grade
Fancy Intense Yellow
Clarity Grade
VVS 2
Depth
68.8%
Table
55%
Girdle
Very Thick
Culet
Pointed
Polish
EXCELLENT
Symmetry
EXCELLENT
Fluorescence
NONE
Inscription(s)
IGI LG807672288
Comments: This Laboratory Grown Diamond was created by Chemical Vapor Deposition (CVD) growth process.