



ELECTRONIC COPY

LG807672254
Report verification at igi.org



June 9, 2026
IGI Report Number **LG807672254**
Description **LABORATORY GROWN DIAMOND**
Shape and Cutting Style **CUT CORNERED
RECTANGULAR MIXED CUT**
Measurements **6.50 X 5.00 X 3.51 MM**
GRADING RESULTS
Carat Weight **1.09 CARAT**
Color Grade **FANCY LIGHT YELLOW**
Clarity Grade **VS 1**

LABORATORY GROWN DIAMOND REPORT

June 9, 2026
IGI Report Number **LG807672254**
Description **LABORATORY GROWN DIAMOND**
Shape and Cutting Style **CUT CORNERED RECTANGULAR
MIXED CUT**
Measurements **6.50 X 5.00 X 3.51 MM**

GRADING RESULTS

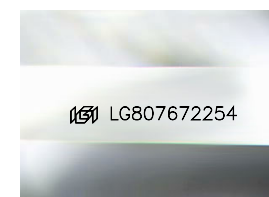
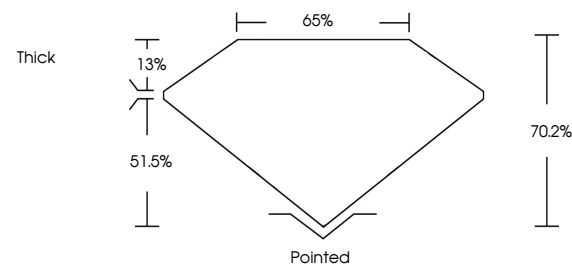
Carat Weight **1.09 CARAT**
Color Grade **FANCY LIGHT YELLOW**
Clarity Grade **VS 1**

ADDITIONAL GRADING INFORMATION

Polish **EXCELLENT**
Symmetry **EXCELLENT**
Fluorescence **NONE**
Inscription(s) **IGI LG807672254**

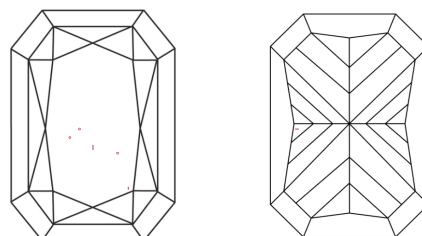
Comments: This Laboratory Grown Diamond was created by Chemical Vapor Deposition (CVD) growth process.

PROPORTIONS



Sample Image Used

CLARITY CHARACTERISTICS



KEY TO SYMBOLS

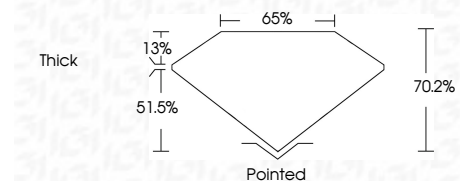
Red symbols indicate internal characteristics.
Green symbols indicate external characteristics.

COLOR

D E F G H I J Faint Very Light Light

CLARITY

FL	IF	VS ¹⁻²	VS ¹⁻²	SI ¹⁻²	I ¹⁻³
Flawless	Internally Flawless	Very Very Slightly Included	Very Slightly Included	Slightly Included	Included



ADDITIONAL GRADING INFORMATION

Polish **EXCELLENT**
Symmetry **EXCELLENT**
Fluorescence **NONE**
Inscription(s) **IGI LG807672254**
Comments: This Laboratory Grown Diamond was created by Chemical Vapor Deposition (CVD) growth process.



June 9, 2026
IGI Report No. **LG807672254**
CUT CORNERED RECT. MIXED CUT
1.09 CARAT
Carat Weight **FANCY LIGHT YELLOW**
Color Grade **VS 1**
Depth **70.2%**
Table **65%**
Girdle **Thick**
Culet **Pointed**
Polish **EXCELLENT**
Symmetry **EXCELLENT**
Fluorescence **NONE**
Inscription(s) **IGI LG807672254**
Comments: This Laboratory Grown Diamond was created by Chemical Vapor Deposition (CVD) growth process.