



ELECTRONIC COPY

LG807669310
Report verification at igi.org



June 8, 2026

IGI Report Number LG807669310

Description LABORATORY GROWN DIAMOND

Shape and Cutting Style ROUND BRILLIANT

Measurements 6.47 - 6.50 X 4.04 MM

GRADING RESULTS

Carat Weight 1.06 CARAT

Color Grade E

Clarity Grade VVS 1

Cut Grade IDEAL

June 8, 2026

IGI Report Number LG807669310

Description LABORATORY GROWN DIAMOND

Shape and Cutting Style ROUND BRILLIANT

Measurements 6.47 - 6.50 X 4.04 MM

GRADING RESULTS

Carat Weight 1.06 CARAT

Color Grade E

Clarity Grade VVS 1

Cut Grade IDEAL

ADDITIONAL GRADING INFORMATION

Polish EXCELLENT

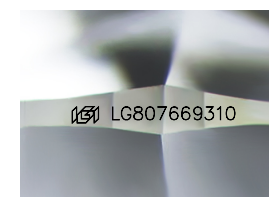
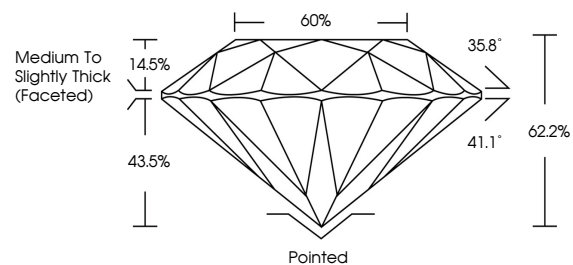
Symmetry EXCELLENT

Fluorescence NONE

Inscription(s) LG807669310

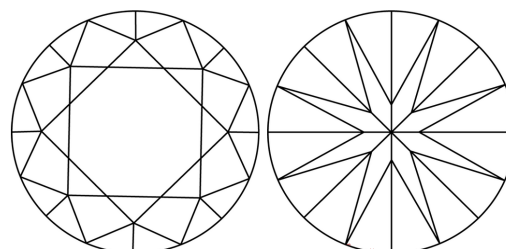
Comments: This Laboratory Grown Diamond was created by Chemical Vapor Deposition (CVD) growth process. Type IIa

PROPORTIONS



Sample Image Used

CLARITY CHARACTERISTICS



KEY TO SYMBOLS

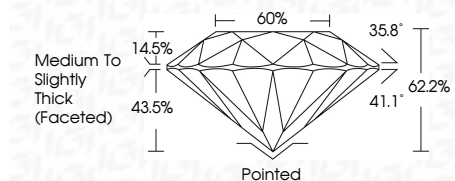
Red symbols indicate internal characteristics. Green symbols indicate external characteristics.

COLOR

D E F G H I J Faint Very Light Light

CLARITY

FL IF VVS 1-2 VS 1-2 SI 1-2 I 1-3
Flawless Internally Flawless Very Very Slightly Included Very Slightly Included Slightly Included Included



ADDITIONAL GRADING INFORMATION

Polish EXCELLENT

Symmetry EXCELLENT

Fluorescence NONE

Inscription(s) LG807669310

Comments: This Laboratory Grown Diamond was created by Chemical Vapor Deposition (CVD) growth process. Type IIa



Summary table of report details: June 8, 2026, IGI Report No LG807669310, ROUND BRILLIANT, 6.47 - 6.50 X 4.04 MM, 1.06 CARAT, E, VVS 1, IDEAL, 62.2%, 60%, Medium To Slightly Thick (Faceted), Pointed, EXCELLENT, EXCELLENT, NONE, LG807669310. Comments: This Laboratory Grown Diamond was created by Chemical Vapor Deposition (CVD) growth process. Type IIa