



ELECTRONIC COPY

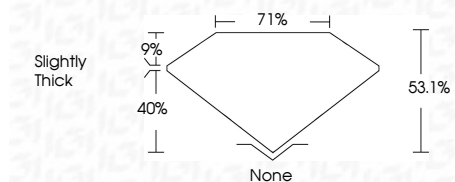
LG807668240
Report verification at igi.org



June 6, 2026
IGI Report Number **LG807668240**
Description **LABORATORY GROWN DIAMOND**
Shape and Cutting Style **HEXAGONAL MIXED CUT**
Measurements **12.03 X 7.50 X 3.98 MM**

GRADING RESULTS

Carat Weight **2.51 CARATS**
Color Grade **D**
Clarity Grade **VVS 1**



ADDITIONAL GRADING INFORMATION

Polish **EXCELLENT**
Symmetry **EXCELLENT**
Fluorescence **NONE**
Inscription(s) **IGI LG807668240**
Comments: This Laboratory Grown Diamond was created by Chemical Vapor Deposition (CVD) growth process. Type IIa



June 6, 2026
IGI Report No LG807668240
HEXAGONAL MIXED CUT
12.03 X 7.50 X 3.98 MM
2.51 CARATS
D
VVS 1
53.1%
71%
Slightly Thick
None
EXCELLENT
EXCELLENT
NONE
IGI LG807668240
Comments: This Laboratory Grown Diamond was created by Chemical Vapor Deposition (CVD) growth process. Type IIa

June 6, 2026
IGI Report Number **LG807668240**
Description **LABORATORY GROWN DIAMOND**
Shape and Cutting Style **HEXAGONAL MIXED CUT**
Measurements **12.03 X 7.50 X 3.98 MM**

GRADING RESULTS

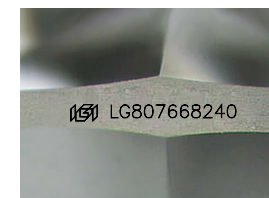
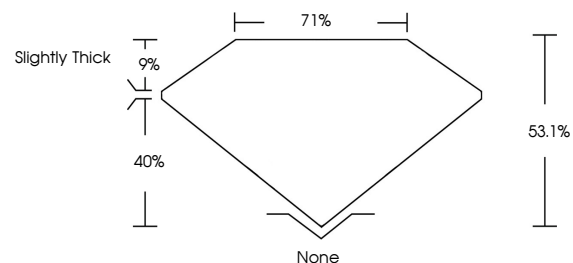
Carat Weight **2.51 CARATS**
Color Grade **D**
Clarity Grade **VVS 1**

ADDITIONAL GRADING INFORMATION

Polish **EXCELLENT**
Symmetry **EXCELLENT**
Fluorescence **NONE**
Inscription(s) **IGI LG807668240**

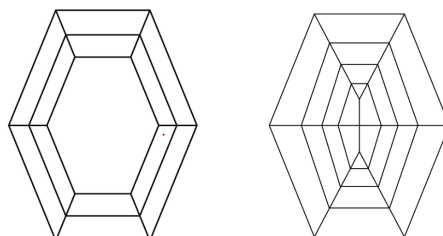
Comments: This Laboratory Grown Diamond was created by Chemical Vapor Deposition (CVD) growth process. Type IIa

PROPORTIONS



Sample Image Used

CLARITY CHARACTERISTICS



KEY TO SYMBOLS

Red symbols indicate internal characteristics.
Green symbols indicate external characteristics.

COLOR

D E F G H I J Faint Very Light Light

CLARITY

FL	IF	VVS ¹⁻²	VS ¹⁻²	SI ¹⁻²	I ¹⁻³
Flawless	Internally Flawless	Very Very Slightly Included	Very Slightly Included	Slightly Included	Included

