



**ELECTRONIC COPY**

LG807660744  
Report verification at igi.org



June 8, 2026  
IGI Report Number **LG807660744**  
Description **LABORATORY GROWN DIAMOND**  
Shape and Cutting Style **ROUND BRILLIANT**  
Measurements **6.51 - 6.54 X 3.98 MM**  
**GRADING RESULTS**  
Carat Weight **1.04 CARAT**  
Color Grade **FANCY INTENSE PINK**  
Clarity Grade **VS 1**  
Cut Grade **IDEAL**

June 8, 2026  
IGI Report Number **LG807660744**  
Description **LABORATORY GROWN DIAMOND**  
Shape and Cutting Style **ROUND BRILLIANT**  
Measurements **6.51 - 6.54 X 3.98 MM**

**GRADING RESULTS**

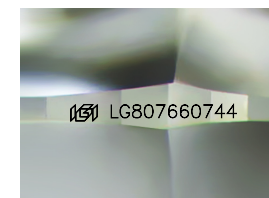
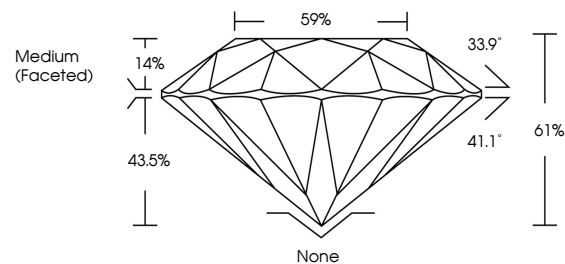
Carat Weight **1.04 CARAT**  
Color Grade **FANCY INTENSE PINK**  
Clarity Grade **VS 1**  
Cut Grade **IDEAL**

**ADDITIONAL GRADING INFORMATION**

Polish **EXCELLENT**  
Symmetry **EXCELLENT**  
Fluorescence **SLIGHT**  
Inscription(s) **IGI LG807660744**

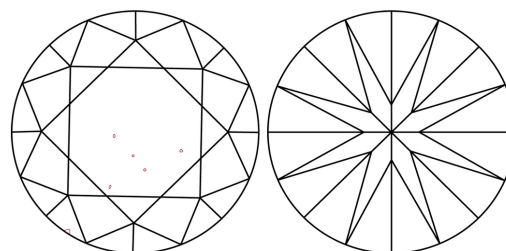
Comments: This Laboratory Grown Diamond was created by Chemical Vapor Deposition (CVD) growth process.  
Indications of post-growth treatment.

**PROPORTIONS**



Sample Image Used

**CLARITY CHARACTERISTICS**



**KEY TO SYMBOLS**

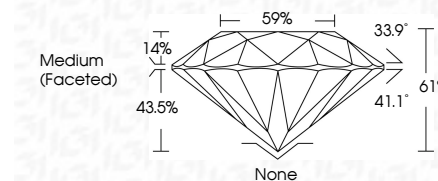
Red symbols indicate internal characteristics.  
Green symbols indicate external characteristics.

**COLOR**

D E F G H I J Faint Very Light Light

**CLARITY**

FL	IF	VS <sup>1-2</sup>	VS <sup>1-2</sup>	SI <sup>1-2</sup>	I <sup>1-3</sup>
Flawless	Internally Flawless	Very Very Slightly Included	Very Slightly Included	Slightly Included	Included



**ADDITIONAL GRADING INFORMATION**

Polish **EXCELLENT**  
Symmetry **EXCELLENT**  
Fluorescence **SLIGHT**  
Inscription(s) **IGI LG807660744**  
Comments: This Laboratory Grown Diamond was created by Chemical Vapor Deposition (CVD) growth process.  
Indications of post-growth treatment.



June 8, 2026  
IGI Report No LG807660744  
**ROUND BRILLIANT**  
6.51 - 6.54 X 3.98 MM  
1.04 CARAT  
**FANCY INTENSE PINK**  
VS 1  
**IDEAL**  
61%  
59%  
Medium (Faceted)  
None  
**EXCELLENT**  
**EXCELLENT**  
**SLIGHT**  
IGI LG807660744  
Comments: This Laboratory Grown Diamond was created by Chemical Vapor Deposition (CVD) growth process.  
Indications of post-growth treatment.