



ELECTRONIC COPY

LG807660719 Report verification at igi.org



June 6, 2026 IGI Report Number LG807660719 Description LABORATORY GROWN DIAMOND Shape and Cutting Style ROUND BRILLIANT Measurements 7.16 - 7.20 X 4.48 MM GRADING RESULTS Carat Weight 1.43 CARAT Color Grade FANCY INTENSE PINK Clarity Grade VVS 2 Cut Grade IDEAL

June 6, 2026 IGI Report Number LG807660719 Description LABORATORY GROWN DIAMOND Shape and Cutting Style ROUND BRILLIANT Measurements 7.16 - 7.20 X 4.48 MM

GRADING RESULTS

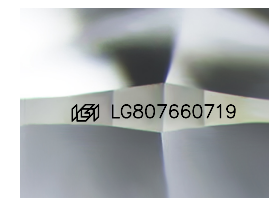
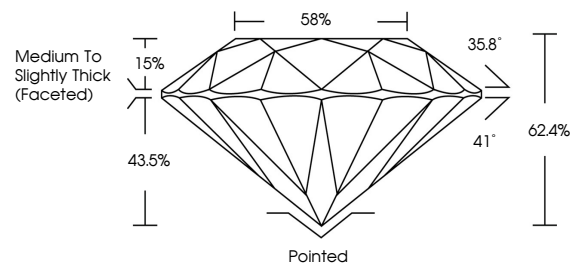
Carat Weight 1.43 CARAT Color Grade FANCY INTENSE PINK Clarity Grade VVS 2 Cut Grade IDEAL

ADDITIONAL GRADING INFORMATION

Polish EXCELLENT Symmetry EXCELLENT Fluorescence SLIGHT Inscription(s) IGI LG807660719

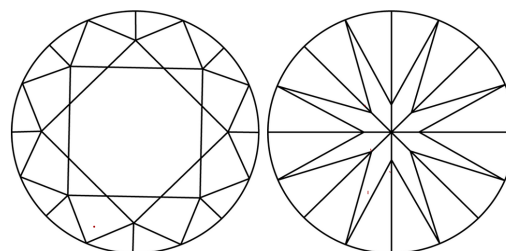
Comments: This Laboratory Grown Diamond was created by Chemical Vapor Deposition (CVD) growth process. Indications of post-growth treatment.

PROPORTIONS



Sample Image Used

CLARITY CHARACTERISTICS



KEY TO SYMBOLS

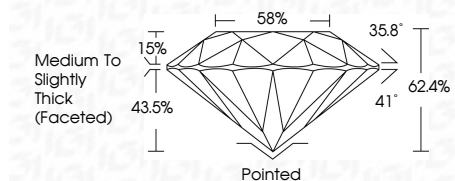
Red symbols indicate internal characteristics. Green symbols indicate external characteristics.

COLOR

D E F G H I J Faint Very Light Light

CLARITY

FL IF VVS 1-2 VS 1-2 SI 1-2 I 1-3 Flawless Internally Flawless Very Very Slightly Included Very Slightly Included Slightly Included Included



ADDITIONAL GRADING INFORMATION

Polish EXCELLENT Symmetry EXCELLENT Fluorescence SLIGHT Inscription(s) IGI LG807660719 Comments: This Laboratory Grown Diamond was created by Chemical Vapor Deposition (CVD) growth process. Indications of post-growth treatment.



June 6, 2026 IGI Report No LG807660719 ROUND BRILLIANT 7.16 - 7.20 X 4.48 MM 1.43 CARAT FANCY INTENSE PINK VVS 2 IDEAL 62.4% 58% Medium To Slightly Thick (Faceted) Pointed EXCELLENT EXCELLENT SLIGHT IGI LG807660719 Comments: This Laboratory Grown Diamond was created by Chemical Vapor Deposition (CVD) growth process. Indications of post-growth treatment.