



ELECTRONIC COPY

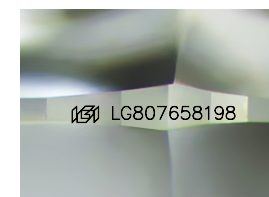
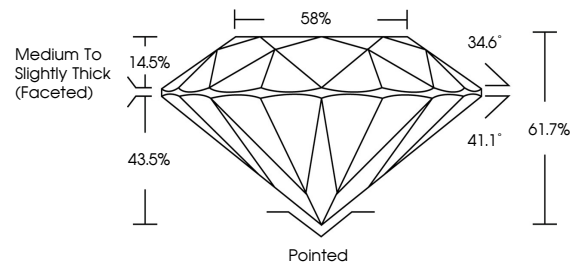
LG807658198
Report verification at igi.org



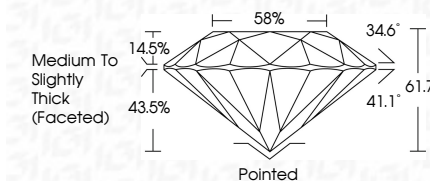
June 4, 2026
IGI Report Number LG807658198
Description LABORATORY GROWN DIAMOND
Shape and Cutting Style ROUND BRILLIANT
Measurements 6.51 - 6.53 X 4.02 MM
GRADING RESULTS
Carat Weight 1.06 CARAT
Color Grade D
Clarity Grade VS 1
Cut Grade IDEAL

June 4, 2026
IGI Report Number LG807658198
Description LABORATORY GROWN DIAMOND
Shape and Cutting Style ROUND BRILLIANT
Measurements 6.51 - 6.53 X 4.02 MM
GRADING RESULTS
Carat Weight 1.06 CARAT
Color Grade D
Clarity Grade VS 1
Cut Grade IDEAL

PROPORTIONS



Sample Image Used



ADDITIONAL GRADING INFORMATION

Polish EXCELLENT
Symmetry EXCELLENT
Fluorescence NONE
Inscription(s) IGI LG807658198

Comments: This Laboratory Grown Diamond was created by Chemical Vapor Deposition (CVD) growth process. Type IIa

ADDITIONAL GRADING INFORMATION

Polish EXCELLENT
Symmetry EXCELLENT
Fluorescence NONE
Inscription(s) IGI LG807658198
Comments: This Laboratory Grown Diamond was created by Chemical Vapor Deposition (CVD) growth process. Type IIa

COLOR

D E F G H I J Faint Very Light Light

CLARITY

FL IF VS 1-2 VS 1-2 SI 1-2 I 1-3
Flawless Internally Flawless Very Very Slightly Included Very Slightly Included Slightly Included Included



IGI



June 4, 2026
IGI Report No LG807658198
ROUND BRILLIANT
6.51 - 6.53 X 4.02 MM
1.06 CARAT
Color Grade D
Clarity Grade VS 1
Depth 61.7%
Table 58%
Medium To Slightly Thick (Faceted)
Pointed
Polish EXCELLENT
Symmetry EXCELLENT
Fluorescence NONE
Inscription(s) IGI LG807658198
Comments: This Laboratory Grown Diamond was created by Chemical Vapor Deposition (CVD) growth process. Type IIa