



June 5, 2026

**IGI Report Number** LG807655156  
**ROUND BRILLIANT**  
**LABORATORY GROWN DIAMOND**  
**5.79 - 5.85 X 3.48 MM**

**Carat Weight** 0.70 CARAT  
**Color Grade** D  
**Clarity Grade** VS 1  
**Cut Grade** IDEAL  
**Polish** EXCELLENT  
**Symmetry** EXCELLENT  
**Fluorescence** NONE  
**Inscription(s)** IGI LG807655156

Comments: This Laboratory Grown Diamond was created by Chemical Vapor Deposition (CVD) growth process. Type IIa

**LABORATORY GROWN DIAMOND REPORT**

June 5, 2026  
IGI Report Number **LG807655156**  
Description **LABORATORY GROWN DIAMOND**  
Shape and Cutting Style **ROUND BRILLIANT**  
Measurements **5.79 - 5.85 X 3.48 MM**

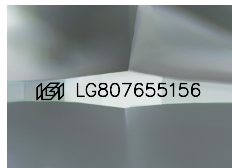
**GRADING RESULTS**

**Carat Weight** 0.70 CARAT  
**Color Grade** D  
**Clarity Grade** VS 1  
**Cut Grade** IDEAL

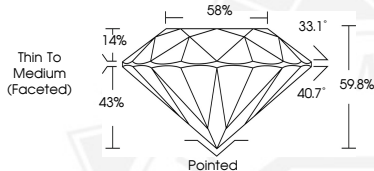
**ADDITIONAL GRADING INFORMATION**

**Polish** EXCELLENT  
**Symmetry** EXCELLENT  
**Fluorescence** NONE  
**Inscription(s)** IGI LG807655156

Comments: This Laboratory Grown Diamond was created by Chemical Vapor Deposition (CVD) growth process. Type IIa



Sample Image Used



June 5, 2026

**IGI Report Number** LG807655156  
**ROUND BRILLIANT**  
**LABORATORY GROWN DIAMOND**  
**5.79 - 5.85 X 3.48 MM**

**Carat Weight** 0.70 CARAT  
**Color Grade** D  
**Clarity Grade** VS 1  
**Cut Grade** IDEAL  
**Polish** EXCELLENT  
**Symmetry** EXCELLENT  
**Fluorescence** NONE  
**Inscription(s)** IGI LG807655156

Comments: This Laboratory Grown Diamond was created by Chemical Vapor Deposition (CVD) growth process. Type IIa



THIS DOCUMENT WAS PRODUCED WITH THE FOLLOWING SECURITY MEASURES: SPECIAL DOCUMENT PAPER, INK SCREENS, WATERMARK, BACKGROUND DESIGNS, HOLOGRAM AND OTHER SECURITY FEATURES NOT LISTED AND DO EXCEED DOCUMENT SECURITY INDUSTRY GUIDELINES.