



ELECTRONIC COPY

LG807651469 Report verification at igi.org



June 4, 2026 IGI Report Number LG807651469 Description LABORATORY GROWN DIAMOND Shape and Cutting Style ROUND BRILLIANT Measurements 8.24 - 8.26 X 4.73 MM GRADING RESULTS Carat Weight 2.00 CARATS Color Grade E Clarity Grade VS 1 Cut Grade VERY GOOD

June 4, 2026 IGI Report Number LG807651469 Description LABORATORY GROWN DIAMOND Shape and Cutting Style ROUND BRILLIANT Measurements 8.24 - 8.26 X 4.73 MM

GRADING RESULTS

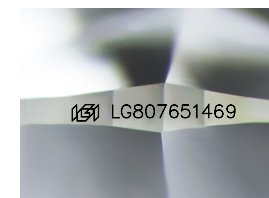
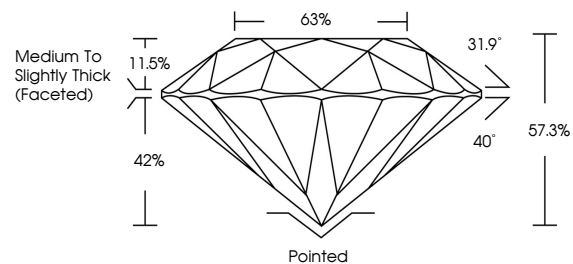
Carat Weight 2.00 CARATS Color Grade E Clarity Grade VS 1 Cut Grade VERY GOOD

ADDITIONAL GRADING INFORMATION

Polish VERY GOOD Symmetry EXCELLENT Fluorescence NONE Inscription(s) LG807651469

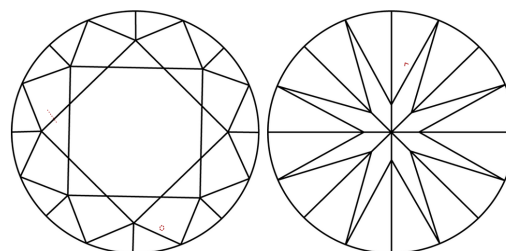
Comments: This Laboratory Grown Diamond was created by Chemical Vapor Deposition (CVD) growth process. Type IIa

PROPORTIONS



Sample Image Used

CLARITY CHARACTERISTICS



KEY TO SYMBOLS

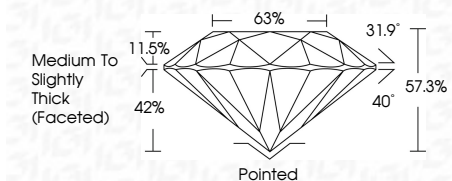
Red symbols indicate internal characteristics. Green symbols indicate external characteristics.

COLOR

D E F G H I J Faint Very Light Light

CLARITY

FL IF VS 1-2 VS 1-2 SI 1-2 I 1-3 Flawless Internally Flawless Very Very Slightly Included Very Slightly Included Slightly Included Included



ADDITIONAL GRADING INFORMATION

Polish VERY GOOD Symmetry EXCELLENT Fluorescence NONE Inscription(s) LG807651469 Comments: This Laboratory Grown Diamond was created by Chemical Vapor Deposition (CVD) growth process. Type IIa



IGI



June 4, 2026 IGI Report No LG807651469 ROUND BRILLIANT 8.24 - 8.26 X 4.73 MM 2.00 CARATS E VERY GOOD VS 1 57.3% 63% Medium To Slightly Thick (Faceted) Pointed VERY GOOD EXCELLENT NONE LG807651469 Comments: This Laboratory Grown Diamond was created by Chemical Vapor Deposition (CVD) growth process. Type IIa