



LABORATORY GROWN DIAMOND REPORT

June 30, 2026
 IGI Report Number **LG807650254**
 Description **LABORATORY GROWN DIAMOND**
 Shape and Cutting Style **OVAL BRILLIANT**
 Measurements **7.60 X 4.97 X 3.02 MM**

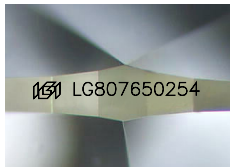
GRADING RESULTS

Carat Weight **0.72 CARAT**
 Color Grade **FANCY INTENSE YELLOW**
 Clarity Grade **VS 2**

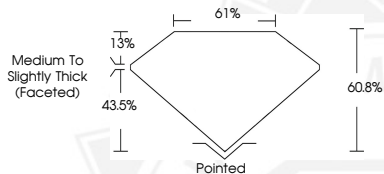
ADDITIONAL GRADING INFORMATION

Polish **VERY GOOD**
 Symmetry **VERY GOOD**
 Fluorescence **NONE**
 Inscription(s) **IGI LG807650254**

Comments: This Laboratory Grown Diamond was created by Chemical Vapor Deposition (CVD) growth process.



Sample Image Used



June 30, 2026
 IGI Report Number **LG807650254**
OVAL BRILLIANT
LABORATORY GROWN DIAMOND
7.60 X 4.97 X 3.02 MM
 Carat Weight **0.72 CARAT**
 Color Grade **FANCY INTENSE YELLOW**
 Clarity Grade **VS 2**
 Polish **VERY GOOD**
 Symmetry **VERY GOOD**
 Fluorescence **NONE**
 Inscription(s) **IGI LG807650254**
 Comments: This Laboratory Grown Diamond was created by Chemical Vapor Deposition (CVD) growth process.



June 30, 2026
 IGI Report Number **LG807650254**
OVAL BRILLIANT
LABORATORY GROWN DIAMOND
7.60 X 4.97 X 3.02 MM
 Carat Weight **0.72 CARAT**
 Color Grade **FANCY INTENSE YELLOW**
 Clarity Grade **VS 2**
 Polish **VERY GOOD**
 Symmetry **VERY GOOD**
 Fluorescence **NONE**
 Inscription(s) **IGI LG807650254**
 Comments: This Laboratory Grown Diamond was created by Chemical Vapor Deposition (CVD) growth process.



THIS DOCUMENT WAS PRODUCED WITH THE FOLLOWING SECURITY MEASURES: SPECIAL DOCUMENT PAPER, INK SCREENS, WATERMARK, BACKGROUND DESIGNS, HOLOGRAM AND OTHER SECURITY FEATURES NOT LISTED AND DO EXCEED DOCUMENT SECURITY INDUSTRY GUIDELINES.