



June 9, 2026

IGI Report Number LG807649901

PIE CUT
LABORATORY GROWN DIAMOND

8.01 X 5.45 X 3.00 MM

Carat Weight 0.70 CARAT
Color Grade FANCY VIVID GREEN
Clarity Grade VS 1
Polish VERY GOOD
Symmetry VERY GOOD
Fluorescence NONE
Inscription(s) IGI LG807649901

Comments: This Laboratory Grown Diamond was created by Chemical Vapor Deposition (CVD) growth process. Indications of post-growth treatment.

LABORATORY GROWN DIAMOND REPORT

June 9, 2026
IGI Report Number LG807649901
Description LABORATORY GROWN DIAMOND
Shape and Cutting Style PIE CUT
Measurements 8.01 X 5.45 X 3.00 MM

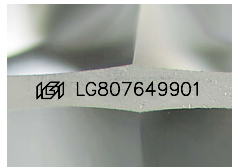
GRADING RESULTS

Carat Weight 0.70 CARAT
Color Grade FANCY VIVID GREEN
Clarity Grade VS 1

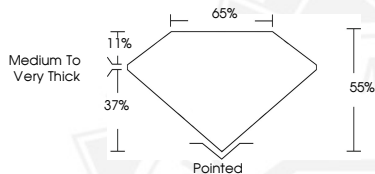
ADDITIONAL GRADING INFORMATION

Polish VERY GOOD
Symmetry VERY GOOD
Fluorescence NONE
Inscription(s) IGI LG807649901

Comments: This Laboratory Grown Diamond was created by Chemical Vapor Deposition (CVD) growth process. Indications of post-growth treatment.



Sample Image Used



June 9, 2026

IGI Report Number LG807649901

PIE CUT
LABORATORY GROWN DIAMOND

8.01 X 5.45 X 3.00 MM

Carat Weight 0.70 CARAT
Color Grade FANCY VIVID GREEN
Clarity Grade VS 1
Polish VERY GOOD
Symmetry VERY GOOD
Fluorescence NONE
Inscription(s) IGI LG807649901

Comments: This Laboratory Grown Diamond was created by Chemical Vapor Deposition (CVD) growth process. Indications of post-growth treatment.



THIS DOCUMENT WAS PRODUCED WITH THE FOLLOWING SECURITY MEASURES: SPECIAL DOCUMENT PAPER, INK SCREENS, WATERMARK, BACKGROUND DESIGNS, HOLOGRAM AND OTHER SECURITY FEATURES NOT LISTED AND DO EXCEED DOCUMENT SECURITY INDUSTRY GUIDELINES.