



**INTERNATIONAL
GEMOLOGICAL
INSTITUTE**

LABORATORY GROWN DIAMOND REPORT

June 4, 2026
IGI Report Number **LG807649680**
Description **LABORATORY GROWN DIAMOND**
Shape and Cutting Style **ROUND BRILLIANT**
Measurements **5.16 - 5.18 X 3.19 MM**

GRADING RESULTS

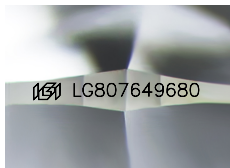
Carat Weight **0.52 CARAT**
Color Grade **D**
Clarity Grade **VVS 1**
Cut Grade **IDEAL**

ADDITIONAL GRADING INFORMATION

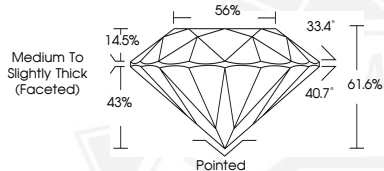
Polish **EXCELLENT**
Symmetry **EXCELLENT**
Fluorescence **NONE**
Inscription(s) **IGI LG807649680**

Comments: As Grown - No indication of post-growth treatment. This Laboratory Grown Diamond was created by High Pressure High Temperature (HPHT) growth process. Type II

ELECTRONIC COPY



Sample Image Used



June 4, 2026
IGI Report Number **LG807649680**
ROUND BRILLIANT
LABORATORY GROWN DIAMOND
5.16 - 5.18 X 3.19 MM
Carat Weight **0.52 CARAT**
Color Grade **D**
Clarity Grade **VVS 1**
Cut Grade **IDEAL**
Polish **EXCELLENT**
Symmetry **EXCELLENT**
Fluorescence **NONE**
Inscription(s) **IGI LG807649680**

Comments: As Grown - No indication of post-growth treatment. This Laboratory Grown Diamond was created by High Pressure High Temperature (HPHT) growth process. Type II



June 4, 2026
IGI Report Number **LG807649680**
ROUND BRILLIANT
LABORATORY GROWN DIAMOND
5.16 - 5.18 X 3.19 MM
Carat Weight **0.52 CARAT**
Color Grade **D**
Clarity Grade **VVS 1**
Cut Grade **IDEAL**
Polish **EXCELLENT**
Symmetry **EXCELLENT**
Fluorescence **NONE**
Inscription(s) **IGI LG807649680**

Comments: As Grown - No indication of post-growth treatment. This Laboratory Grown Diamond was created by High Pressure High Temperature (HPHT) growth process. Type II



THIS DOCUMENT WAS PRODUCED WITH THE FOLLOWING SECURITY MEASURES: SPECIAL DOCUMENT PAPER, INK SCREENS, WATERMARK, BACKGROUND DESIGNS, HOLOGRAM AND OTHER SECURITY FEATURES NOT LISTED AND DO EXCEED DOCUMENT SECURITY INDUSTRY GUIDELINES.

For terms & conditions and to verify this report, please visit www.igi.org