



ELECTRONIC COPY

LG807649267 Report verification at igi.org



June 4, 2026 IGI Report Number LG807649267 Description LABORATORY GROWN DIAMOND Shape and Cutting Style ROUND BRILLIANT Measurements 6.40 - 6.42 X 4.04 MM GRADING RESULTS Carat Weight 1.04 CARAT Color Grade D Clarity Grade VVS 2 Cut Grade EXCELLENT

June 4, 2026 IGI Report Number LG807649267 Description LABORATORY GROWN DIAMOND Shape and Cutting Style ROUND BRILLIANT Measurements 6.40 - 6.42 X 4.04 MM

GRADING RESULTS

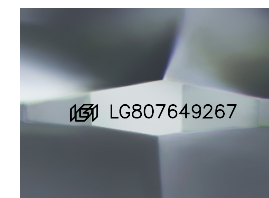
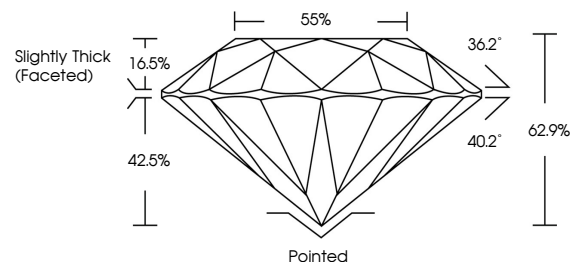
Carat Weight 1.04 CARAT Color Grade D Clarity Grade VVS 2 Cut Grade EXCELLENT

ADDITIONAL GRADING INFORMATION

Polish EXCELLENT Symmetry EXCELLENT Fluorescence NONE Inscription(s) IGI LG807649267

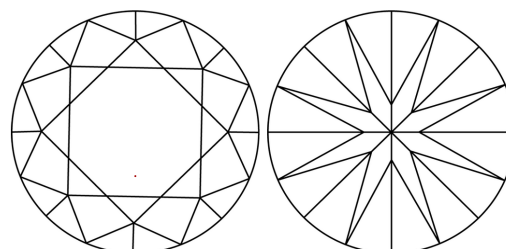
Comments: This Laboratory Grown Diamond was created by Chemical Vapor Deposition (CVD) growth process. Type IIa

PROPORTIONS



Sample Image Used

CLARITY CHARACTERISTICS



KEY TO SYMBOLS

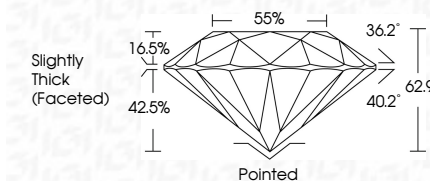
Red symbols indicate internal characteristics. Green symbols indicate external characteristics.

COLOR

D E F G H I J Faint Very Light Light

CLARITY

FL IF VVS 1-2 VS 1-2 SI 1-2 I 1-3 Flawless Internally Flawless Very Very Slightly Included Very Slightly Included Slightly Included Included



ADDITIONAL GRADING INFORMATION

Polish EXCELLENT Symmetry EXCELLENT Fluorescence NONE Inscription(s) IGI LG807649267 Comments: This Laboratory Grown Diamond was created by Chemical Vapor Deposition (CVD) growth process. Type IIa



IGI



June 4, 2026 IGI Report No LG807649267 ROUND BRILLIANT 6.40 - 6.42 X 4.04 MM 1.04 CARAT D VVS 2 EXCELLENT 62.9% 55% Slightly Thick (Faceted) Pointed EXCELLENT EXCELLENT NONE NONE IGI LG807649267 Comments: This Laboratory Grown Diamond was created by Chemical Vapor Deposition (CVD) growth process. Type IIa