



**ELECTRONIC COPY**

LG807648899  
Report verification at igi.org



June 4, 2026

IGI Report Number **LG807648899**

Description **LABORATORY GROWN DIAMOND**

Shape and Cutting Style **CUT CORNERED  
RECTANGULAR MODIFIED  
BRILLIANT**

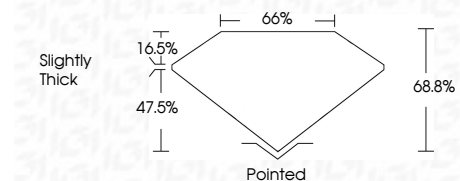
Measurements **8.71 X 6.74 X 4.64 MM**

**GRADING RESULTS**

Carat Weight **2.53 CARATS**

Color Grade **D**

Clarity Grade **VS 1**



**ADDITIONAL GRADING INFORMATION**

Polish **EXCELLENT**

Symmetry **EXCELLENT**

Fluorescence **NONE**

Inscription(s) **IGI LG807648899**

Comments: This Laboratory Grown Diamond was created by Chemical Vapor Deposition (CVD) growth process. Type IIa



|  |                           |                                       |             |   |      |       |       |                |         |           |           |      |                 |
|--|---------------------------|---------------------------------------|-------------|---|------|-------|-------|----------------|---------|-----------|-----------|------|-----------------|
| June 4, 2026   | IGI Report No LG807648899 | CUT CORNERED RECT. MODIFIED BRILLIANT | 2.53 CARATS | D | VS 1 | 68.8% | 47.5% | Slightly Thick | Pointed | EXCELLENT | EXCELLENT | NONE | IGI LG807648899 |
| <p>Comments: This Laboratory Grown Diamond was created by Chemical Vapor Deposition (CVD) growth process. Type IIa</p> |                           |                                       |             |   |      |       |       |                |         |           |           |      |                 |

**LABORATORY GROWN DIAMOND REPORT**

June 4, 2026

IGI Report Number **LG807648899**

Description **LABORATORY GROWN DIAMOND**

Shape and Cutting Style **CUT CORNERED RECTANGULAR  
MODIFIED BRILLIANT**

Measurements **8.71 X 6.74 X 4.64 MM**

**GRADING RESULTS**

Carat Weight **2.53 CARATS**

Color Grade **D**

Clarity Grade **VS 1**

**ADDITIONAL GRADING INFORMATION**

Polish **EXCELLENT**

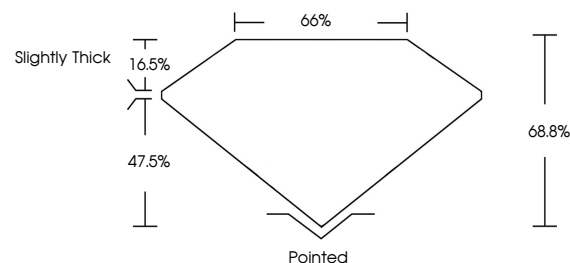
Symmetry **EXCELLENT**

Fluorescence **NONE**

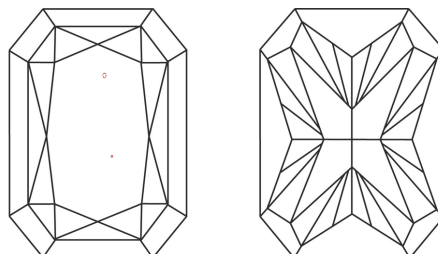
Inscription(s) **IGI LG807648899**

Comments: This Laboratory Grown Diamond was created by Chemical Vapor Deposition (CVD) growth process. Type IIa

**PROPORTIONS**

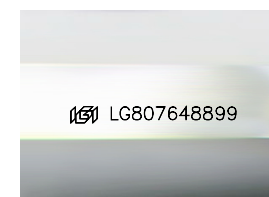


**CLARITY CHARACTERISTICS**



**KEY TO SYMBOLS**

Red symbols indicate internal characteristics.  
Green symbols indicate external characteristics.



Sample Image Used

**COLOR**

D E F G H I J Faint Very Light Light

**CLARITY**

|          |                     |                             |                        |                   |                  |
|----------|---------------------|-----------------------------|------------------------|-------------------|------------------|
| FL       | IF                  | VS <sup>1-2</sup>           | VS <sup>1-2</sup>      | SI <sup>1-2</sup> | I <sup>1-3</sup> |
| Flawless | Internally Flawless | Very Very Slightly Included | Very Slightly Included | Slightly Included | Included         |

