



**ELECTRONIC COPY**

LG807648709  
Report verification at igi.org



June 16, 2026

IGI Report Number **LG807648709**

Description **LABORATORY GROWN DIAMOND**

Shape and Cutting Style **ROUND BRILLIANT**

Measurements **11.02 - 11.08 X 6.77 MM**

**GRADING RESULTS**

Carat Weight **5.09 CARATS**

Color Grade **E**

Clarity Grade **VVS 2**

Cut Grade **IDEAL**

June 16, 2026

IGI Report Number **LG807648709**

Description **LABORATORY GROWN DIAMOND**

Shape and Cutting Style **ROUND BRILLIANT**

Measurements **11.02 - 11.08 X 6.77 MM**

**GRADING RESULTS**

Carat Weight **5.09 CARATS**

Color Grade **E**

Clarity Grade **VVS 2**

Cut Grade **IDEAL**

**ADDITIONAL GRADING INFORMATION**

Polish **EXCELLENT**

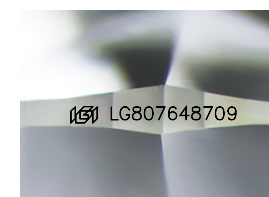
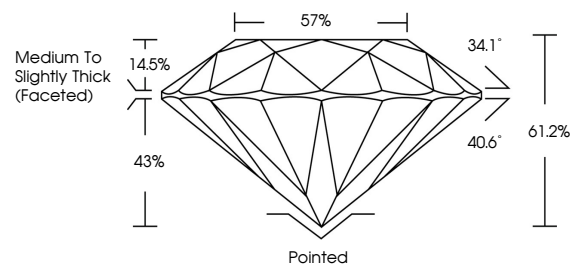
Symmetry **EXCELLENT**

Fluorescence **NONE**

Inscription(s) **IGI LG807648709**

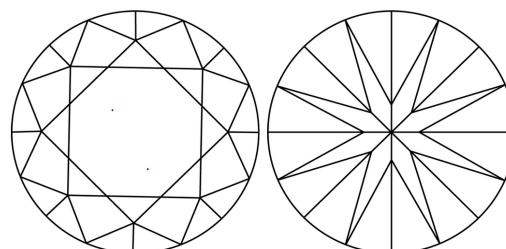
Comments: This Laboratory Grown Diamond was created by Chemical Vapor Deposition (CVD) growth process. Type IIa

**PROPORTIONS**



Sample Image Used

**CLARITY CHARACTERISTICS**



**KEY TO SYMBOLS**

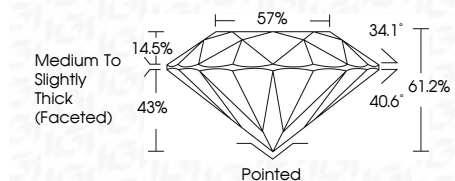
Red symbols indicate internal characteristics.  
Green symbols indicate external characteristics.

**COLOR**

D E F G H I J Faint Very Light Light

**CLARITY**

| FL       | IF                  | VVS <sup>1-2</sup>          | VS <sup>1-2</sup>      | SI <sup>1-2</sup> | I <sup>1-3</sup> |
|----------|---------------------|-----------------------------|------------------------|-------------------|------------------|
| Flawless | Internally Flawless | Very Very Slightly Included | Very Slightly Included | Slightly Included | Included         |



**ADDITIONAL GRADING INFORMATION**

Polish **EXCELLENT**

Symmetry **EXCELLENT**

Fluorescence **NONE**

Inscription(s) **IGI LG807648709**

Comments: This Laboratory Grown Diamond was created by Chemical Vapor Deposition (CVD) growth process. Type IIa



**IGI**



|                           |                           |                 |             |       |       |       |       |                                    |                                    |           |           |           |                 |   |
|---------------------------|---------------------------|-----------------|-------------|-------|-------|-------|-------|------------------------------------|------------------------------------|-----------|-----------|-----------|-----------------|---|
| June 16, 2026             | IGI Report No LG807648709 | ROUND BRILLIANT | 5.09 CARATS | E     | VVS 2 | IDEAL | 61.2% | 57%                                | Medium To Slightly Thick (Faceted) | Pointed   | EXCELLENT | EXCELLENT | NONE            | IGI LG807648709   |
| IGI Report No LG807648709 | ROUND BRILLIANT           | 5.09 CARATS     | E           | VVS 2 | IDEAL | 61.2% | 57%   | Medium To Slightly Thick (Faceted) | Pointed                            | EXCELLENT | EXCELLENT | NONE      | IGI LG807648709 | Comments: This Laboratory Grown Diamond was created by Chemical Vapor Deposition (CVD) growth process. Type IIa |