



ELECTRONIC COPY

LG807648652
Report verification at igi.org



June 15, 2026

IGI Report Number LG807648652

Description LABORATORY GROWN DIAMOND

Shape and Cutting Style ROUND BRILLIANT

Measurements 10.61 - 10.66 X 6.53 MM

GRADING RESULTS

Carat Weight 4.54 CARATS

Color Grade E

Clarity Grade VVS 2

Cut Grade IDEAL

June 15, 2026
IGI Report Number LG807648652
Description LABORATORY GROWN DIAMOND
Shape and Cutting Style ROUND BRILLIANT
Measurements 10.61 - 10.66 X 6.53 MM

GRADING RESULTS

Carat Weight 4.54 CARATS

Color Grade E

Clarity Grade VVS 2

Cut Grade IDEAL

ADDITIONAL GRADING INFORMATION

Polish EXCELLENT

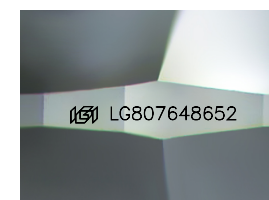
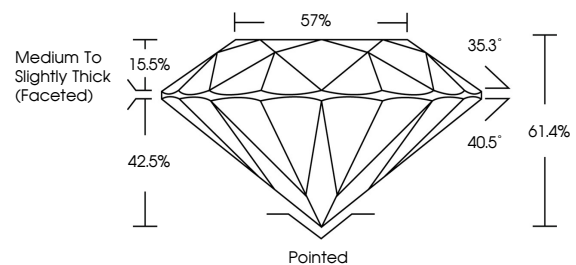
Symmetry EXCELLENT

Fluorescence NONE

Inscription(s) IGI LG807648652

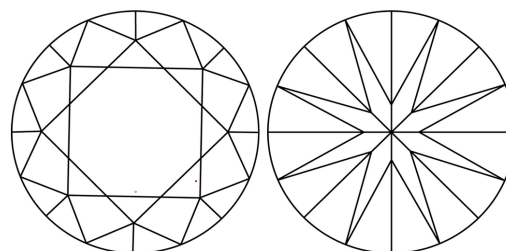
Comments: This Laboratory Grown Diamond was created by Chemical Vapor Deposition (CVD) growth process. Type IIa

PROPORTIONS



Sample Image Used

CLARITY CHARACTERISTICS



KEY TO SYMBOLS

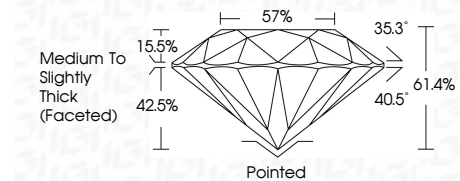
Red symbols indicate internal characteristics. Green symbols indicate external characteristics.

COLOR

D E F G H I J Faint Very Light Light

CLARITY

Table with columns for clarity grades: FL, IF, VVS 1-2, VS 1-2, SI 1-2, I 1-3 and corresponding descriptions: Flawless, Internally Flawless, Very Very Slightly Included, Very Slightly Included, Slightly Included, Included.



ADDITIONAL GRADING INFORMATION

Polish EXCELLENT

Symmetry EXCELLENT

Fluorescence NONE

Inscription(s) IGI LG807648652

Comments: This Laboratory Grown Diamond was created by Chemical Vapor Deposition (CVD) growth process. Type IIa



Summary table of report details including Date, Report No, Shape, Carat Weight, Color Grade, Clarity Grade, Depth, Table, Girdle, Cutlet, Polish, Symmetry, Fluorescence, and Inscription(s).