



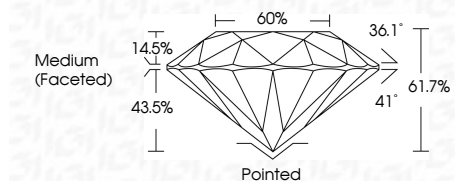
ELECTRONIC COPY

LG807637510 Report verification at igi.org



June 4, 2026 IGI Report Number LG807637510 Description LABORATORY GROWN DIAMOND Shape and Cutting Style ROUND BRILLIANT Measurements 7.37 - 7.40 X 4.56 MM

GRADING RESULTS Carat Weight 1.54 CARAT Color Grade E Clarity Grade VVS 1 Cut Grade IDEAL



ADDITIONAL GRADING INFORMATION Polish EXCELLENT Symmetry EXCELLENT Fluorescence NONE Inscription(s) IGI LG807637510 Comments: This Laboratory Grown Diamond was created by Chemical Vapor Deposition (CVD) growth process. Type IIa



June 4, 2026 IGI Report No LG807637510 ROUND BRILLIANT 7.37 - 7.40 X 4.56 MM 1.54 CARAT E VVS 1 IDEAL 61.7% 60% Medium (Faceted) Pointed EXCELLENT EXCELLENT NONE NONE IGI LG807637510 Comments: This Laboratory Grown Diamond was created by Chemical Vapor Deposition (CVD) growth process. Type IIa

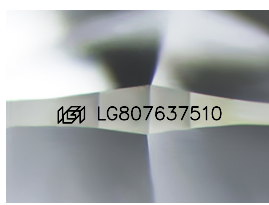
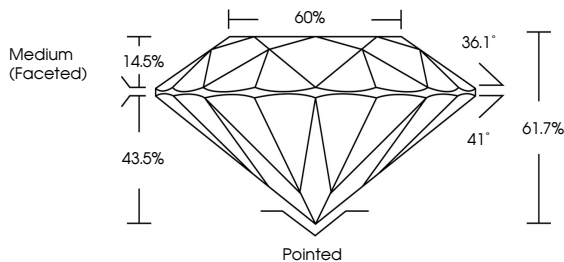
June 4, 2026 IGI Report Number LG807637510 Description LABORATORY GROWN DIAMOND Shape and Cutting Style ROUND BRILLIANT Measurements 7.37 - 7.40 X 4.56 MM

GRADING RESULTS Carat Weight 1.54 CARAT Color Grade E Clarity Grade VVS 1 Cut Grade IDEAL

ADDITIONAL GRADING INFORMATION Polish EXCELLENT Symmetry EXCELLENT Fluorescence NONE Inscription(s) IGI LG807637510

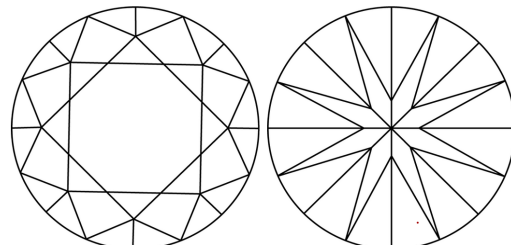
Comments: This Laboratory Grown Diamond was created by Chemical Vapor Deposition (CVD) growth process. Type IIa

PROPORTIONS



Sample Image Used

CLARITY CHARACTERISTICS



KEY TO SYMBOLS Red symbols indicate internal characteristics. Green symbols indicate external characteristics.

Color scale table with categories D, E, F, G, H, I, J, Faint, Very Light, Light

Clarity scale table with categories FL, IF, VS 1-2, VS 1-2, SI 1-2, I 1-3, Flawless, Internally Flawless, Very Very Slightly Included, Very Slightly Included, Slightly Included, Included

