



**ELECTRONIC COPY**

LG807634346  
Report verification at igi.org



June 5, 2026

IGI Report Number **LG807634346**

Description **LABORATORY GROWN DIAMOND**

Shape and Cutting Style **CUT CORNERED  
RECTANGULAR MODIFIED  
BRILLIANT**

Measurements **7.48 X 5.13 X 3.45 MM**

**GRADING RESULTS**

Carat Weight **1.18 CARAT**

Color Grade **E**

Clarity Grade **VVS 2**

**LABORATORY GROWN DIAMOND REPORT**

June 5, 2026

IGI Report Number **LG807634346**

Description **LABORATORY GROWN DIAMOND**

Shape and Cutting Style **CUT CORNERED RECTANGULAR  
MODIFIED BRILLIANT**

Measurements **7.48 X 5.13 X 3.45 MM**

**GRADING RESULTS**

Carat Weight **1.18 CARAT**

Color Grade **E**

Clarity Grade **VVS 2**

**ADDITIONAL GRADING INFORMATION**

Polish **EXCELLENT**

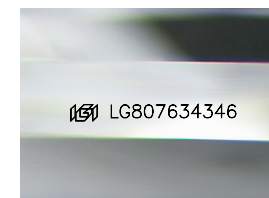
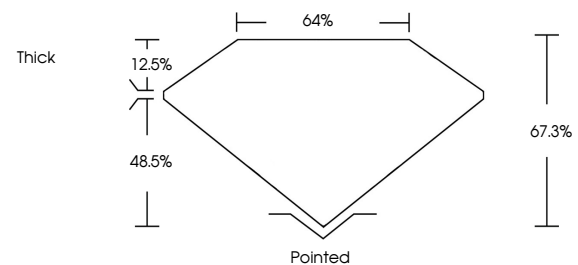
Symmetry **EXCELLENT**

Fluorescence **NONE**

Inscription(s) **IGI LG807634346**

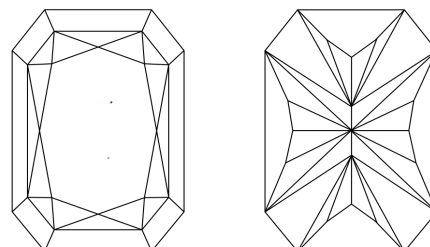
Comments: This Laboratory Grown Diamond was created by Chemical Vapor Deposition (CVD) growth process. Type IIa

**PROPORTIONS**



Sample Image Used

**CLARITY CHARACTERISTICS**



**KEY TO SYMBOLS**

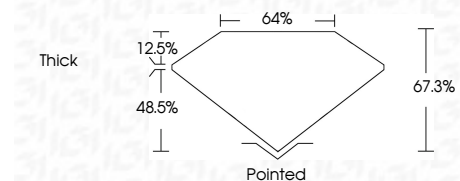
Red symbols indicate internal characteristics.  
Green symbols indicate external characteristics.

**COLOR**

D E F G H I J Faint Very Light Light

**CLARITY**

FL	IF	VVS <sup>1-2</sup>	VS <sup>1-2</sup>	SI <sup>1-2</sup>	I <sup>1-3</sup>
Flawless	Internally Flawless	Very Very Slightly Included	Very Slightly Included	Slightly Included	Included



**ADDITIONAL GRADING INFORMATION**

Polish **EXCELLENT**

Symmetry **EXCELLENT**

Fluorescence **NONE**

Inscription(s) **IGI LG807634346**

Comments: This Laboratory Grown Diamond was created by Chemical Vapor Deposition (CVD) growth process. Type IIa



**IGI**



June 5, 2026  
IGI Report No LG807634346  
CUT CORNERED RECT. MODIFIED BRILLIANT  
7.48 X 5.13 X 3.45 MM  
1.18 CARAT  
E  
VVS 2  
67.3%  
48.5%  
Thick  
Pointed  
EXCELLENT  
EXCELLENT  
NONE  
IGI LG807634346

Comments: This Laboratory Grown Diamond was created by Chemical Vapor Deposition (CVD) growth process. Type IIa