



**ELECTRONIC COPY**

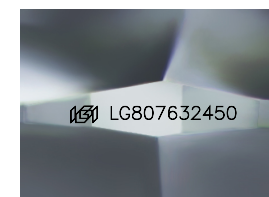
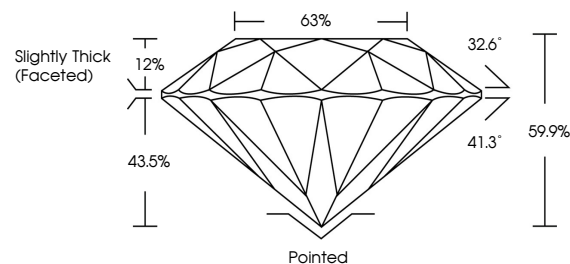
LG807632450  
Report verification at [igi.org](http://igi.org)



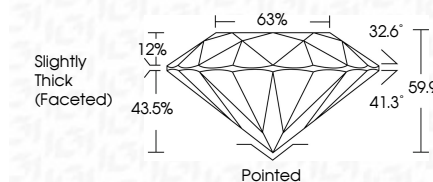
June 4, 2026  
IGI Report Number **LG807632450**  
Description **LABORATORY GROWN DIAMOND**  
Shape and Cutting Style **ROUND BRILLIANT**  
Measurements **6.45 - 6.48 X 3.87 MM**  
**GRADING RESULTS**  
Carat Weight **1.01 CARAT**  
Color Grade **F**  
Clarity Grade **VVS 2**  
Cut Grade **EXCELLENT**

June 4, 2026  
IGI Report Number **LG807632450**  
Description **LABORATORY GROWN DIAMOND**  
Shape and Cutting Style **ROUND BRILLIANT**  
Measurements **6.45 - 6.48 X 3.87 MM**  
**GRADING RESULTS**  
Carat Weight **1.01 CARAT**  
Color Grade **F**  
Clarity Grade **VVS 2**  
Cut Grade **EXCELLENT**

**PROPORTIONS**



Sample Image Used



**ADDITIONAL GRADING INFORMATION**  
Polish **EXCELLENT**  
Symmetry **EXCELLENT**  
Fluorescence **NONE**  
Inscription(s) **IGI LG807632450**  
Comments: This Laboratory Grown Diamond was created by Chemical Vapor Deposition (CVD) growth process. Type IIa

**COLOR**

D E F G H I J Faint Very Light Light

**CLARITY**

FL	IF	VS <sup>1-2</sup>	VS <sup>1-2</sup>	SI <sup>1-2</sup>	I <sup>1-3</sup>
Flawless	Internally Flawless	Very Very Slightly Included	Very Slightly Included	Slightly Included	Included

**ADDITIONAL GRADING INFORMATION**

Polish **EXCELLENT**  
Symmetry **EXCELLENT**  
Fluorescence **NONE**  
Inscription(s) **IGI LG807632450**  
Comments: This Laboratory Grown Diamond was created by Chemical Vapor Deposition (CVD) growth process. Type IIa



**IGI**



June 4, 2026  
IGI Report No **LG807632450**  
**ROUND BRILLIANT**  
6.45 - 6.48 X 3.87 MM  
Carat Weight **1.01 CARAT**  
Color Grade **F**  
Clarity Grade **VVS 2**  
Depth **EXCELLENT**  
Table **63%**  
Girdle **Slightly Thick (Faceted)**  
Culet **Pointed**  
Polish **EXCELLENT**  
Symmetry **EXCELLENT**  
Fluorescence **NONE**  
Inscriptions(s) **IGI LG807632450**  
Comments: This Laboratory Grown Diamond was created by Chemical Vapor Deposition (CVD) growth process. Type IIa