



ELECTRONIC COPY

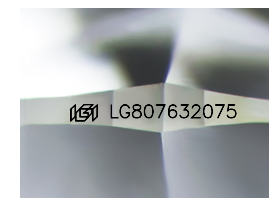
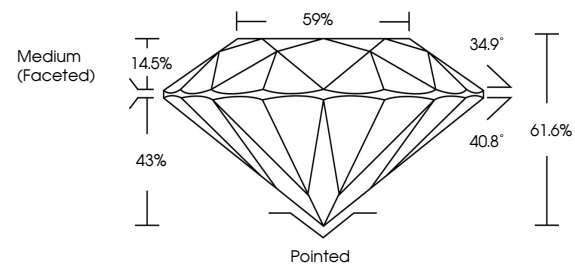
LG807632075
Report verification at igi.org



June 2, 2026
IGI Report Number **LG807632075**
Description **LABORATORY GROWN DIAMOND**
Shape and Cutting Style **ROUND BRILLIANT**
Measurements **8.15 - 8.18 X 5.03 MM**
GRADING RESULTS
Carat Weight **2.10 CARATS**
Color Grade **D**
Clarity Grade **VS 1**
Cut Grade **IDEAL**

June 2, 2026
IGI Report Number **LG807632075**
Description **LABORATORY GROWN DIAMOND**
Shape and Cutting Style **ROUND BRILLIANT**
Measurements **8.15 - 8.18 X 5.03 MM**

PROPORTIONS

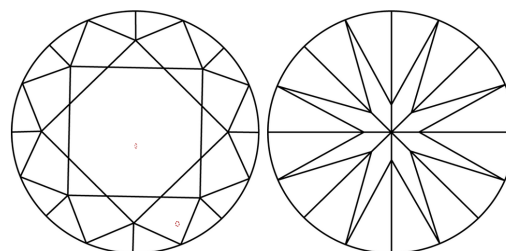


Sample Image Used

GRADING RESULTS

Carat Weight **2.10 CARATS**
Color Grade **D**
Clarity Grade **VS 1**
Cut Grade **IDEAL**

CLARITY CHARACTERISTICS



KEY TO SYMBOLS

Red symbols indicate internal characteristics.
Green symbols indicate external characteristics.

ADDITIONAL GRADING INFORMATION

Polish **EXCELLENT**
Symmetry **EXCELLENT**
Fluorescence **NONE**
Inscription(s) **IGI LG807632075**

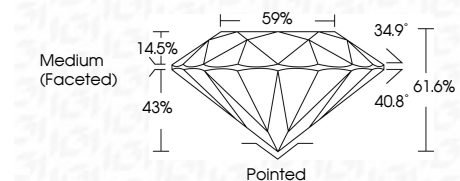
Comments: This Laboratory Grown Diamond was created by Chemical Vapor Deposition (CVD) growth process.
Type IIa

COLOR

D E F G H I J Faint Very Light Light

CLARITY

FL	IF	VS ¹⁻²	VS ¹⁻²	SI ¹⁻²	I ¹⁻³
Flawless	Internally Flawless	Very Very Slightly Included	Very Slightly Included	Slightly Included	Included



ADDITIONAL GRADING INFORMATION

Polish **EXCELLENT**
Symmetry **EXCELLENT**
Fluorescence **NONE**
Inscription(s) **IGI LG807632075**
Comments: This Laboratory Grown Diamond was created by Chemical Vapor Deposition (CVD) growth process.
Type IIa



June 2, 2026
IGI Report No LG807632075
ROUND BRILLIANT
8.15 - 8.18 X 5.03 MM
2.10 CARATS
D
D
VS 1
IDEAL
61.6%
59%
Medium (Faceted)Pointed
EXCELLENT
EXCELLENT
NONE
IGI LG807632075
Comments: This Laboratory Grown Diamond was created by Chemical Vapor Deposition (CVD) growth process.
Type IIa