



**ELECTRONIC COPY**

LG807630323  
Report verification at [igi.org](http://igi.org)



June 6, 2026

IGI Report Number **LG807630323**

Description **LABORATORY GROWN DIAMOND**

Shape and Cutting Style **ROUND BRILLIANT**

Measurements **7.02 - 7.06 X 4.34 MM**

**GRADING RESULTS**

Carat Weight **1.32 CARAT**

Color Grade **D**

Clarity Grade **VVS 2**

Cut Grade **IDEAL**

June 6, 2026

IGI Report Number **LG807630323**

Description **LABORATORY GROWN DIAMOND**

Shape and Cutting Style **ROUND BRILLIANT**

Measurements **7.02 - 7.06 X 4.34 MM**

**GRADING RESULTS**

Carat Weight **1.32 CARAT**

Color Grade **D**

Clarity Grade **VVS 2**

Cut Grade **IDEAL**

**ADDITIONAL GRADING INFORMATION**

Polish **EXCELLENT**

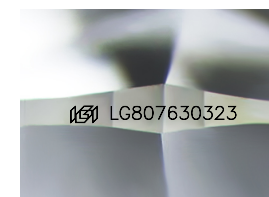
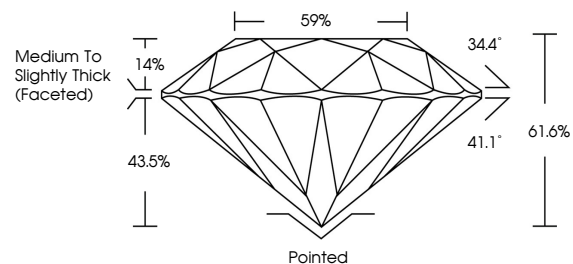
Symmetry **EXCELLENT**

Fluorescence **NONE**

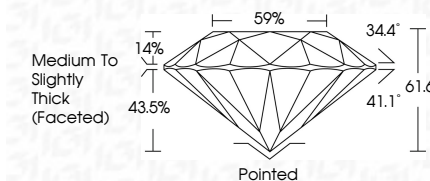
Inscription(s) **LG807630323**

Comments: This Laboratory Grown Diamond was created by Chemical Vapor Deposition (CVD) growth process. Type IIa

**PROPORTIONS**



Sample Image Used



**COLOR**

D E F G H I J Faint Very Light Light

**CLARITY**

| FL       | IF                  | VVS <sup>1-2</sup>          | VS <sup>1-2</sup>      | SI <sup>1-2</sup> | I <sup>1-3</sup> |
|----------|---------------------|-----------------------------|------------------------|-------------------|------------------|
| Flawless | Internally Flawless | Very Very Slightly Included | Very Slightly Included | Slightly Included | Included         |

**ADDITIONAL GRADING INFORMATION**

Polish **EXCELLENT**

Symmetry **EXCELLENT**

Fluorescence **NONE**

Inscription(s) **LG807630323**

Comments: This Laboratory Grown Diamond was created by Chemical Vapor Deposition (CVD) growth process. Type IIa



**IGI**



|                       |                           |                 |               |           |       |       |       |       |                                    |          |              |                |   |             |
|-----------------------|---------------------------|-----------------|---------------|-----------|-------|-------|-------|-------|------------------------------------|----------|--------------|----------------|---|-------------|
| June 6, 2026          | IGI Report No LG807630323 | ROUND BRILLIANT | 1.32 CARAT    | D         | VVS 2 | IDEAL | 61.6% | 59%   | Medium To Slightly Thick (Faceted) | Pointed  | EXCELLENT    | EXCELLENT      | NONE  | LG807630323 |
| 7.02 - 7.06 X 4.34 MM | Carat Weight              | Color Grade     | Clarity Grade | Cut Grade | Depth | Table | Grade | Culet | Polish                             | Symmetry | Fluorescence | Inscription(s) | Comments: This Laboratory Grown Diamond was created by Chemical Vapor Deposition (CVD) growth process. Type IIa |             |