



ELECTRONIC COPY

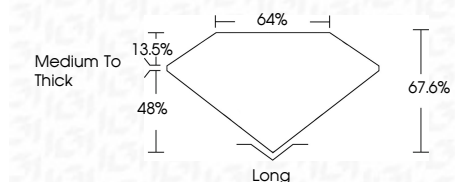
LG807629156
Report verification at igi.org



June 6, 2026
IGI Report Number **LG807629156**
Description **LABORATORY GROWN DIAMOND**
Shape and Cutting Style **CUSHION MIXED CUT**
Measurements **10.45 X 7.32 X 4.95 MM**

GRADING RESULTS

Carat Weight **3.85 CARATS**
Color Grade **FANCY VIVID PINK**
Clarity Grade **VVS 2**



ADDITIONAL GRADING INFORMATION

Polish **EXCELLENT**
Symmetry **EXCELLENT**
Fluorescence **STRONG**
Inscription(s) **IGI LG807629156**
Comments: This Laboratory Grown Diamond was created by Chemical Vapor Deposition (CVD) growth process. Indications of post-growth treatment.



June 6, 2026
IGI Report No LG807629156
CUSHION MIXED CUT
3.85 CARATS
FANCY VIVID PINK
VVS 2
67.6%
48%
Medium To Thick
Long
EXCELLENT
EXCELLENT
STRONG
IGI LG807629156

Comments: This Laboratory Grown Diamond was created by Chemical Vapor Deposition (CVD) growth process. Indications of post-growth treatment.

LABORATORY GROWN DIAMOND REPORT

June 6, 2026
IGI Report Number **LG807629156**
Description **LABORATORY GROWN DIAMOND**
Shape and Cutting Style **CUSHION MIXED CUT**
Measurements **10.45 X 7.32 X 4.95 MM**

GRADING RESULTS

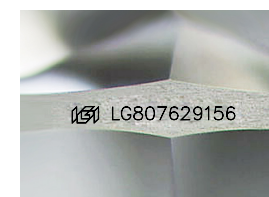
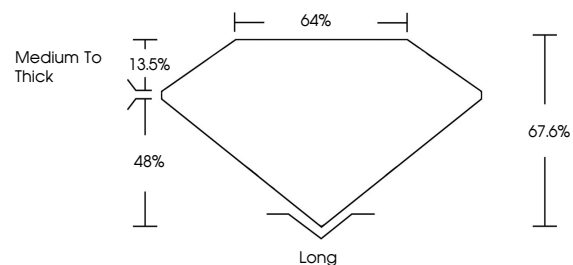
Carat Weight **3.85 CARATS**
Color Grade **FANCY VIVID PINK**
Clarity Grade **VVS 2**

ADDITIONAL GRADING INFORMATION

Polish **EXCELLENT**
Symmetry **EXCELLENT**
Fluorescence **STRONG**
Inscription(s) **IGI LG807629156**

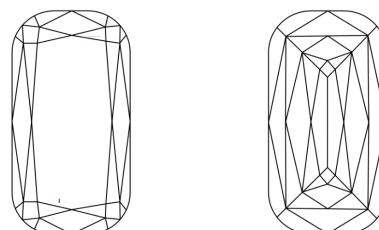
Comments: This Laboratory Grown Diamond was created by Chemical Vapor Deposition (CVD) growth process. Indications of post-growth treatment.

PROPORTIONS



Sample Image Used

CLARITY CHARACTERISTICS



KEY TO SYMBOLS

Red symbols indicate internal characteristics.
Green symbols indicate external characteristics.

COLOR

D E F G H I J Faint Very Light Light

CLARITY

FL	IF	VVS ¹⁻²	VS ¹⁻²	SI ¹⁻²	I ¹⁻³
Flawless	Internally Flawless	Very Very Slightly Included	Very Slightly Included	Slightly Included	Included

