



ELECTRONIC COPY

LG807628941
Report verification at igi.org



June 3, 2026

IGI Report Number **LG807628941**

Description **LABORATORY GROWN DIAMOND**

Shape and Cutting Style **HALF MOON BRILLIANT**

Measurements **8.44 X 5.57 X 3.41 MM**

GRADING RESULTS

Carat Weight **1.06 CARAT**

Color Grade **D**

Clarity Grade **VVS 2**

June 3, 2026

IGI Report Number **LG807628941**

Description **LABORATORY GROWN DIAMOND**

Shape and Cutting Style **HALF MOON BRILLIANT**

Measurements **8.44 X 5.57 X 3.41 MM**

GRADING RESULTS

Carat Weight **1.06 CARAT**

Color Grade **D**

Clarity Grade **VVS 2**

ADDITIONAL GRADING INFORMATION

Polish **EXCELLENT**

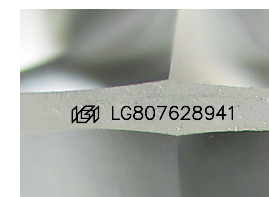
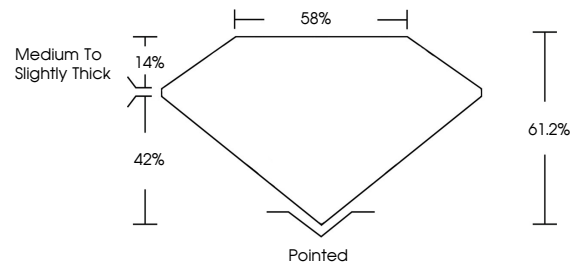
Symmetry **EXCELLENT**

Fluorescence **NONE**

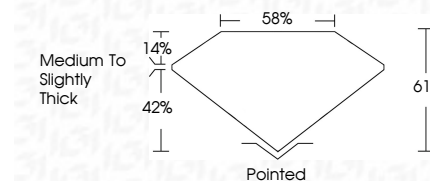
Inscription(s) **IGI LG807628941**

Comments: This Laboratory Grown Diamond was created by Chemical Vapor Deposition (CVD) growth process.
Type IIa

PROPORTIONS



Sample Image Used



COLOR

D E F G H I J Faint Very Light Light

CLARITY

FL	IF	VVS ¹⁻²	VS ¹⁻²	SI ¹⁻²	I ¹⁻³
Flawless	Internally Flawless	Very Very Slightly Included	Very Slightly Included	Slightly Included	Included

ADDITIONAL GRADING INFORMATION

Polish **EXCELLENT**

Symmetry **EXCELLENT**

Fluorescence **NONE**

Inscription(s) **IGI LG807628941**

Comments: This Laboratory Grown Diamond was created by Chemical Vapor Deposition (CVD) growth process.
Type IIa



June 3, 2026
IGI Report No LG807628941
HALF MOON BRILLIANT
8.44 X 5.57 X 3.41 MM
Carat Weight 1.06 CARAT
Color Grade D
Clarity Grade VVS 2
Depth 61.2%
Table 58%
Girdle Medium to Slightly Thick
Culet Pointed
Polish EXCELLENT
Symmetry EXCELLENT
Fluorescence NONE
Inscription(s) IGI LG807628941

Comments: This Laboratory Grown Diamond was created by Chemical Vapor Deposition (CVD) growth process.
Type IIa