



ELECTRONIC COPY

LG807627717
Report verification at igi.org



June 12, 2026

IGI Report Number **LG807627717**

Description **LABORATORY GROWN DIAMOND**

Shape and Cutting Style **EMERALD CUT**

Measurements **11.18 X 8.00 X 5.52 MM**

GRADING RESULTS

Carat Weight **5.03 CARATS**

Color Grade **FANCY VIVID GREEN**

Clarity Grade **VS 1**

LABORATORY GROWN DIAMOND REPORT

June 12, 2026

IGI Report Number **LG807627717**

Description **LABORATORY GROWN DIAMOND**

Shape and Cutting Style **EMERALD CUT**

Measurements **11.18 X 8.00 X 5.52 MM**

GRADING RESULTS

Carat Weight **5.03 CARATS**

Color Grade **FANCY VIVID GREEN**

Clarity Grade **VS 1**

ADDITIONAL GRADING INFORMATION

Polish **EXCELLENT**

Symmetry **EXCELLENT**

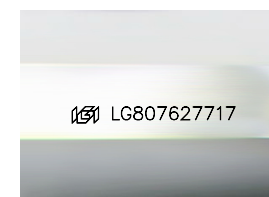
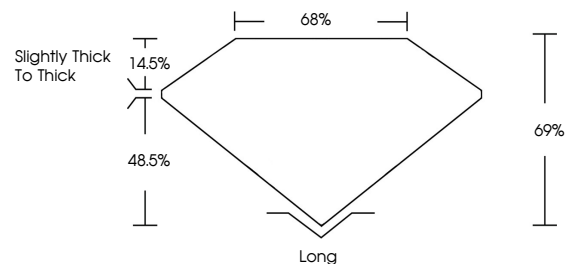
Fluorescence **NONE**

Inscription(s) **IGI LG807627717**

Comments: This Laboratory Grown Diamond was created by Chemical Vapor Deposition (CVD) growth process.

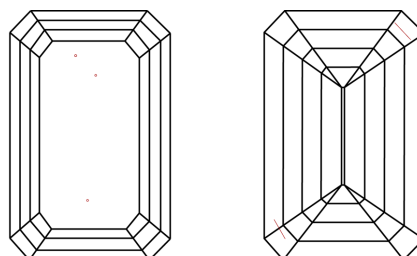
Indications of post-growth treatment.

PROPORTIONS



Sample Image Used

CLARITY CHARACTERISTICS



KEY TO SYMBOLS

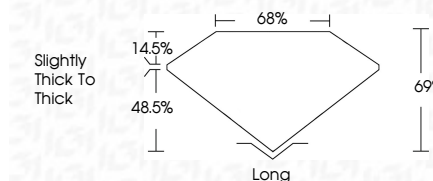
Red symbols indicate internal characteristics.
Green symbols indicate external characteristics.

COLOR

D E F G H I J Faint Very Light Light

CLARITY

FL	IF	VS ¹⁻²	VS ¹⁻²	SI ¹⁻²	I ¹⁻³
Flawless	Internally Flawless	Very Very Slightly Included	Very Slightly Included	Slightly Included	Included



ADDITIONAL GRADING INFORMATION

Polish **EXCELLENT**

Symmetry **EXCELLENT**

Fluorescence **NONE**

Inscription(s) **IGI LG807627717**

Comments: This Laboratory Grown Diamond was created by Chemical Vapor Deposition (CVD) growth process.

Indications of post-growth treatment.



June 12, 2026	IGI Report No. LG807627717	EMERALD CUT	5.03 CARATS	FANCY VIVID GREEN	VS 1	69%	68%	Slightly Thick To Thick	Long	EXCELLENT	EXCELLENT	NONE	IGI LG807627717
Carat Weight	Color Grade	Clarity Grade	Table	Depth	Graile	Culet	Polish	Symmetry	Fluorescence	Inscription(s)	Comments: This Laboratory Grown Diamond was created by Chemical Vapor Deposition (CVD) growth process. Indications of post-growth treatment.		