



ELECTRONIC COPY

LG807625635
Report verification at igi.org



June 10, 2026
IGI Report Number **LG807625635**
Description **LABORATORY GROWN DIAMOND**
Shape and Cutting Style **CUSHION MODIFIED BRILLIANT**
Measurements **8.88 X 8.05 X 5.49 MM**
GRADING RESULTS
Carat Weight **3.59 CARATS**
Color Grade **FANCY VIVID YELLOW**
Clarity Grade **VVS 2**

June 10, 2026
IGI Report Number **LG807625635**
Description **LABORATORY GROWN DIAMOND**
Shape and Cutting Style **CUSHION MODIFIED BRILLIANT**
Measurements **8.88 X 8.05 X 5.49 MM**

GRADING RESULTS

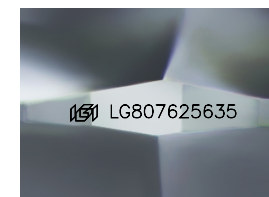
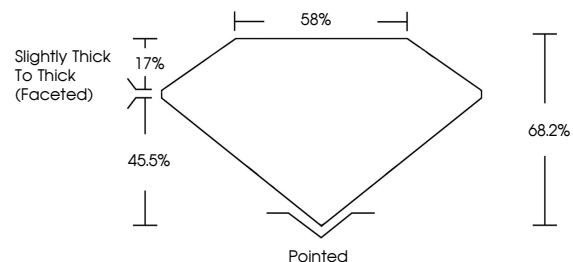
Carat Weight **3.59 CARATS**
Color Grade **FANCY VIVID YELLOW**
Clarity Grade **VVS 2**

ADDITIONAL GRADING INFORMATION

Polish **EXCELLENT**
Symmetry **EXCELLENT**
Fluorescence **NONE**
Inscription(s) **IGI LG807625635**

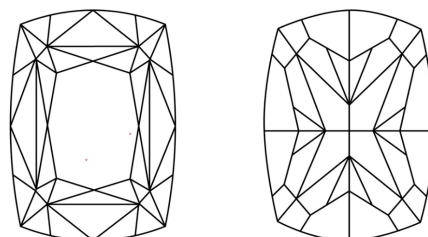
Comments: This Laboratory Grown Diamond was created by Chemical Vapor Deposition (CVD) growth process.

PROPORTIONS



Sample Image Used

CLARITY CHARACTERISTICS



KEY TO SYMBOLS

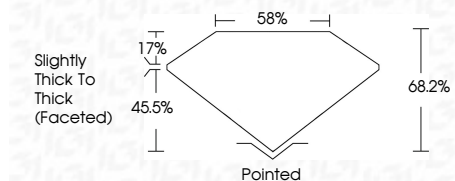
Red symbols indicate internal characteristics.
Green symbols indicate external characteristics.

COLOR

D E F G H I J Faint Very Light Light

CLARITY

FL	IF	VVS ¹⁻²	VS ¹⁻²	SI ¹⁻²	I ¹⁻³
Flawless	Internally Flawless	Very Very Slightly Included	Very Slightly Included	Slightly Included	Included



ADDITIONAL GRADING INFORMATION

Polish **EXCELLENT**
Symmetry **EXCELLENT**
Fluorescence **NONE**
Inscription(s) **IGI LG807625635**
Comments: This Laboratory Grown Diamond was created by Chemical Vapor Deposition (CVD) growth process.



June 10, 2026
IGI Report No **LG807625635**
CUSHION MODIFIED BRILLIANT
8.88 X 8.05 X 5.49 MM
Carat Weight **3.59 CARATS**
Color Grade **FANCY VIVID YELLOW**
Clarity Grade **VVS 2**
Depth **68.2%**
Table **58%**
Girdle **Slightly Thick To Thick (Faceted)**
Culet **Pointed**
Polish **EXCELLENT**
Symmetry **EXCELLENT**
Fluorescence **NONE**
Inscription(s) **IGI LG807625635**
Comments: This Laboratory Grown Diamond was created by Chemical Vapor Deposition (CVD) growth process.