



**ELECTRONIC COPY**

LG807625600  
Report verification at igi.org



June 8, 2026  
IGI Report Number **LG807625600**  
Description **LABORATORY GROWN DIAMOND**  
Shape and Cutting Style **CUSHION MIXED CUT**  
Measurements **9.27 X 6.80 X 4.43 MM**  
**GRADING RESULTS**  
Carat Weight **2.54 CARATS**  
Color Grade **FANCY VIVID BLUE**  
Clarity Grade **SI 1**

June 8, 2026  
IGI Report Number **LG807625600**  
Description **LABORATORY GROWN DIAMOND**  
Shape and Cutting Style **CUSHION MIXED CUT**  
Measurements **9.27 X 6.80 X 4.43 MM**

**GRADING RESULTS**

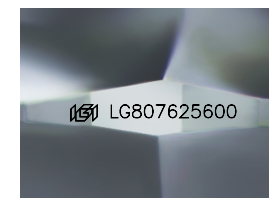
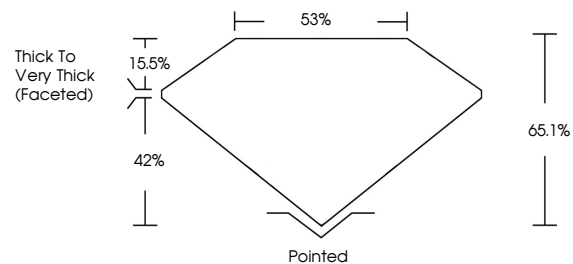
Carat Weight **2.54 CARATS**  
Color Grade **FANCY VIVID BLUE**  
Clarity Grade **SI 1**

**ADDITIONAL GRADING INFORMATION**

Polish **EXCELLENT**  
Symmetry **EXCELLENT**  
Fluorescence **NONE**  
Inscription(s) **IGI LG807625600**

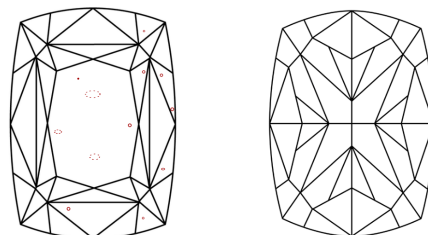
Comments: This Laboratory Grown Diamond was created by Chemical Vapor Deposition (CVD) growth process.  
Indications of post-growth treatment.

**PROPORTIONS**



Sample Image Used

**CLARITY CHARACTERISTICS**



**KEY TO SYMBOLS**

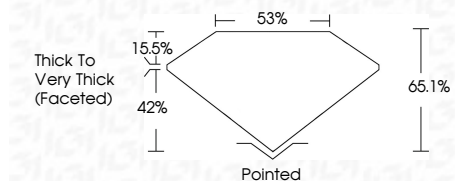
Red symbols indicate internal characteristics.  
Green symbols indicate external characteristics.

**COLOR**

D E F G H I J Faint Very Light Light

**CLARITY**

FL	IF	VS <sup>1-2</sup>	VS <sup>1-2</sup>	SI <sup>1-2</sup>	I <sup>1-3</sup>
Flawless	Internally Flawless	Very Very Slightly Included	Very Slightly Included	Slightly Included	Included



**ADDITIONAL GRADING INFORMATION**

Polish **EXCELLENT**  
Symmetry **EXCELLENT**  
Fluorescence **NONE**  
Inscription(s) **IGI LG807625600**  
Comments: This Laboratory Grown Diamond was created by Chemical Vapor Deposition (CVD) growth process.  
Indications of post-growth treatment.



June 8, 2026  
IGI Report No LG807625600  
**CUSHION MIXED CUT**  
2.54 CARATS  
Carat Weight  
Color Grade **FANCY VIVID BLUE**  
Clarity Grade **SI 1**  
Depth **65.1%**  
Table **53%**  
Girdle  
Thick to Very Thick (Faceted)  
Culet Pointed  
Polish **EXCELLENT**  
Symmetry **EXCELLENT**  
Fluorescence **NONE**  
Inscription(s) **IGI LG807625600**  
Comments: This Laboratory Grown Diamond was created by Chemical Vapor Deposition (CVD) growth process.  
Indications of post-growth treatment.