



ELECTRONIC COPY

LG807625597
Report verification at igi.org



June 6, 2026

IGI Report Number **LG807625597**

Description **LABORATORY GROWN DIAMOND**

Shape and Cutting Style **CUSHION MIXED CUT**

Measurements **8.58 X 6.21 X 4.18 MM**

GRADING RESULTS

Carat Weight **2.07 CARATS**

Color Grade **FANCY VIVID PINK**

Clarity Grade **VS 1**

June 6, 2026

IGI Report Number **LG807625597**

Description **LABORATORY GROWN DIAMOND**

Shape and Cutting Style **CUSHION MIXED CUT**

Measurements **8.58 X 6.21 X 4.18 MM**

GRADING RESULTS

Carat Weight **2.07 CARATS**

Color Grade **FANCY VIVID PINK**

Clarity Grade **VS 1**

ADDITIONAL GRADING INFORMATION

Polish **EXCELLENT**

Symmetry **EXCELLENT**

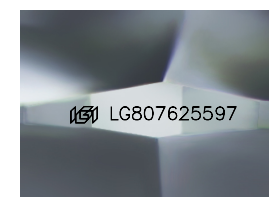
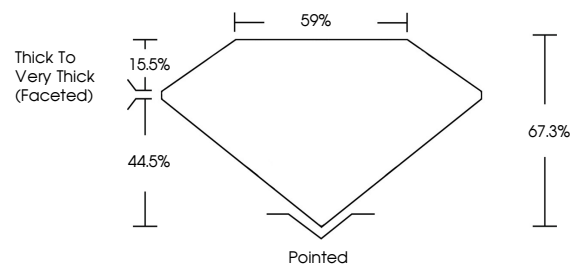
Fluorescence **SLIGHT**

Inscription(s) **IGI LG807625597**

Comments: This Laboratory Grown Diamond was created by Chemical Vapor Deposition (CVD) growth process.

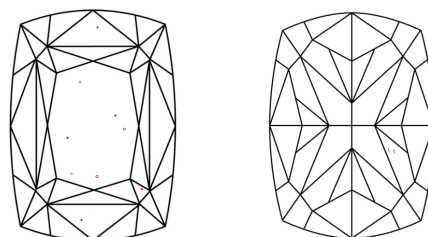
Indications of post-growth treatment.

PROPORTIONS



Sample Image Used

CLARITY CHARACTERISTICS



KEY TO SYMBOLS

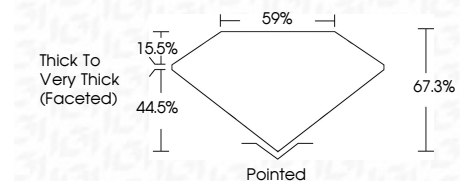
Red symbols indicate internal characteristics.
Green symbols indicate external characteristics.

COLOR

D E F G H I J Faint Very Light Light

CLARITY

FL	IF	VS ¹⁻²	VS ¹⁻²	SI ¹⁻²	I ¹⁻³
Flawless	Internally Flawless	Very Very Slightly Included	Very Slightly Included	Slightly Included	Included



ADDITIONAL GRADING INFORMATION

Polish **EXCELLENT**

Symmetry **EXCELLENT**

Fluorescence **SLIGHT**

Inscription(s) **IGI LG807625597**

Comments: This Laboratory Grown Diamond was created by Chemical Vapor Deposition (CVD) growth process. Indications of post-growth treatment.



June 6, 2026
IGI Report No LG807625597
CUSHION MIXED CUT

2.07 CARATS
Carat Weight
FANCY VIVID PINK
Color Grade

VS 1
Clarity Grade

8.58 X 6.21 X 4.18 MM
Depth
67.3%
69%
Table
Girdle
Thick to Very Thick (Faceted)

Pointed
Culet
EXCELLENT
Polish
EXCELLENT
Symmetry
SLIGHT
Fluorescence
IGI LG807625597
Inscription(s)

Comments: This Laboratory Grown Diamond was created by Chemical Vapor Deposition (CVD) growth process. Indications of post-growth treatment.