



ELECTRONIC COPY

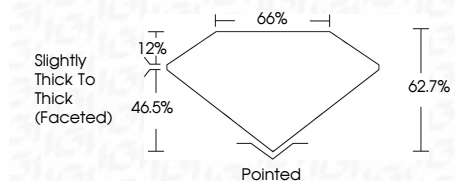
LG807625245
Report verification at igi.org



June 10, 2026
IGI Report Number **LG807625245**
Description **LABORATORY GROWN DIAMOND**
Shape and Cutting Style **SQUARE CUSHION BRILLIANT**
Measurements **10.20 X 10.16 X 6.37 MM**

GRADING RESULTS

Carat Weight **4.58 CARATS**
Color Grade **F**
Clarity Grade **VS 1**

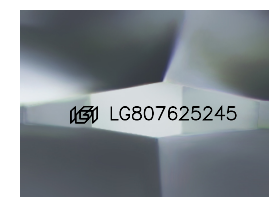


ADDITIONAL GRADING INFORMATION

Polish **EXCELLENT**
Symmetry **EXCELLENT**
Fluorescence **NONE**
Inscription(s) **(IGI) LG807625245**
Comments: This Laboratory Grown Diamond was created by Chemical Vapor Deposition (CVD) growth process. Type IIa

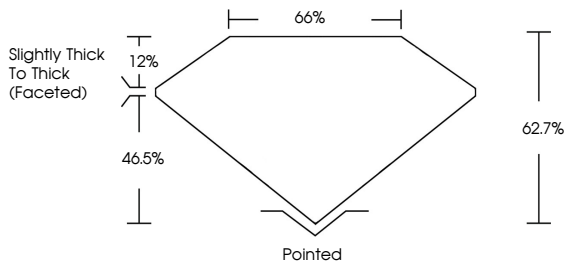


June 10, 2026
IGI Report No. **LG807625245**
SQUARE CUSHION BRILLIANT
10.20 X 10.16 X 6.37 MM
Carat Weight **4.58 CARATS**
Color Grade **F**
Clarity Grade **VS 1**
Depth **62.7%**
Table **46.5%**
Girdle **Slightly Thick To Thick (Faceted)**
Culet **Pointed**
Polish **EXCELLENT**
Symmetry **EXCELLENT**
Fluorescence **NONE**
Inscription(s) **(IGI) LG807625245**
Comments: This Laboratory Grown Diamond was created by Chemical Vapor Deposition (CVD) growth process. Type IIa

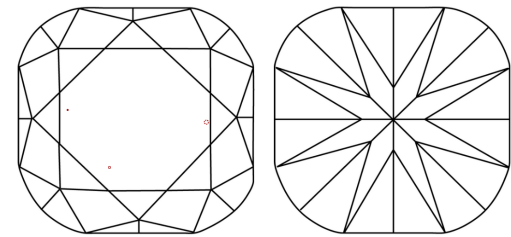


Sample Image Used

PROPORTIONS



CLARITY CHARACTERISTICS



KEY TO SYMBOLS

Red symbols indicate internal characteristics.
Green symbols indicate external characteristics.

COLOR

| | | | | | | | | | |
|---|---|---|---|---|---|---|-------|------------|-------|
| D | E | F | G | H | I | J | Faint | Very Light | Light |
|---|---|---|---|---|---|---|-------|------------|-------|

CLARITY

| | | | | | |
|----------|---------------------|-----------------------------|------------------------|-------------------|------------------|
| FL | IF | VS ¹⁻² | VS ¹⁻² | SI ¹⁻² | I ¹⁻³ |
| Flawless | Internally Flawless | Very Very Slightly Included | Very Slightly Included | Slightly Included | Included |

