



ELECTRONIC COPY

LG807625190
Report verification at igi.org



June 13, 2026

IGI Report Number LG807625190

Description LABORATORY GROWN DIAMOND

Shape and Cutting Style ROUND BRILLIANT

Measurements 10.62 - 10.69 X 6.51 MM

GRADING RESULTS

Carat Weight 4.56 CARATS

Color Grade E

Clarity Grade VVS 2

Cut Grade IDEAL

June 13, 2026
IGI Report Number LG807625190
Description LABORATORY GROWN DIAMOND
Shape and Cutting Style ROUND BRILLIANT
Measurements 10.62 - 10.69 X 6.51 MM

GRADING RESULTS

Carat Weight 4.56 CARATS

Color Grade E

Clarity Grade VVS 2

Cut Grade IDEAL

ADDITIONAL GRADING INFORMATION

Polish EXCELLENT

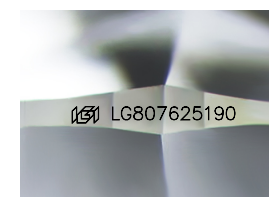
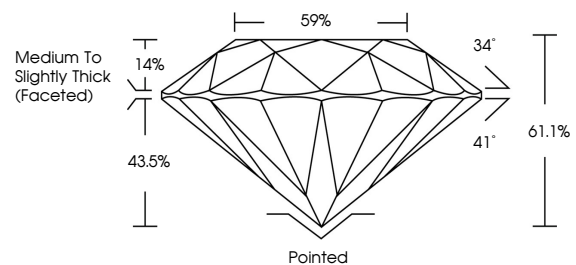
Symmetry EXCELLENT

Fluorescence NONE

Inscription(s) IGI LG807625190

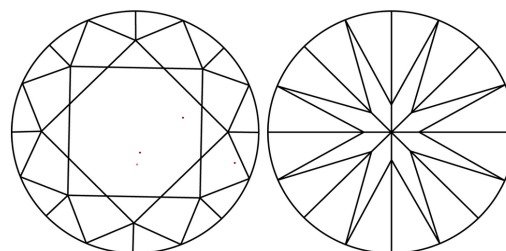
Comments: This Laboratory Grown Diamond was created by Chemical Vapor Deposition (CVD) growth process. Type IIa

PROPORTIONS



Sample Image Used

CLARITY CHARACTERISTICS



KEY TO SYMBOLS

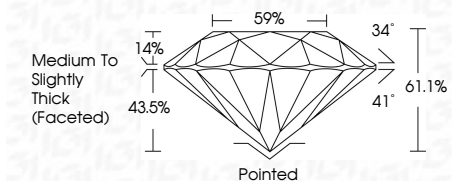
Red symbols indicate internal characteristics. Green symbols indicate external characteristics.

COLOR

D E F G H I J Faint Very Light Light

CLARITY

FL IF VVS 1-2 VS 1-2 SI 1-2 I 1-3
Flawless Internally Flawless Very Very Slightly Included Very Slightly Included Slightly Included Included



ADDITIONAL GRADING INFORMATION

Polish EXCELLENT

Symmetry EXCELLENT

Fluorescence NONE

Inscription(s) IGI LG807625190

Comments: This Laboratory Grown Diamond was created by Chemical Vapor Deposition (CVD) growth process. Type IIa



IGI



Summary of report details including date, report number, description, measurements, grading results, and additional information.