



ELECTRONIC COPY

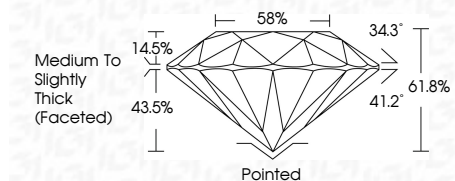
LG807625146 Report verification at igi.org



June 16, 2026 IGI Report Number LG807625146 Description LABORATORY GROWN DIAMOND Shape and Cutting Style ROUND BRILLIANT Measurements 9.26 - 9.30 X 5.74 MM

GRADING RESULTS

Carat Weight 3.03 CARATS Color Grade E Clarity Grade VVS 2 Cut Grade IDEAL



ADDITIONAL GRADING INFORMATION

Polish EXCELLENT Symmetry EXCELLENT Fluorescence NONE Inscription(s) LG807625146 Comments: This Laboratory Grown Diamond was created by Chemical Vapor Deposition (CVD) growth process. Type IIa



June 16, 2026 IGI Report No LG807625146 ROUND BRILLIANT 3.03 CARATS E 9.26 - 9.30 X 5.74 MM VS 2 IDEAL 61.8% 58% Medium To Slightly Thick (Faceted) Pointed EXCELLENT EXCELLENT NONE LG807625146

June 16, 2026 IGI Report Number LG807625146 Description LABORATORY GROWN DIAMOND Shape and Cutting Style ROUND BRILLIANT Measurements 9.26 - 9.30 X 5.74 MM

GRADING RESULTS

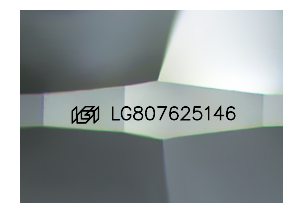
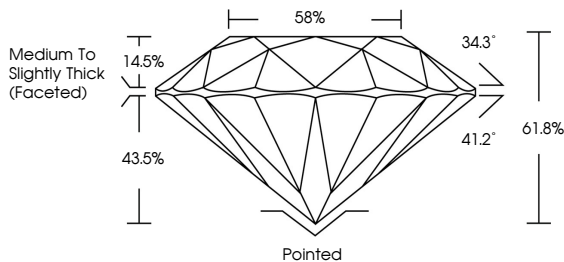
Carat Weight 3.03 CARATS Color Grade E Clarity Grade VVS 2 Cut Grade IDEAL

ADDITIONAL GRADING INFORMATION

Polish EXCELLENT Symmetry EXCELLENT Fluorescence NONE Inscription(s) LG807625146

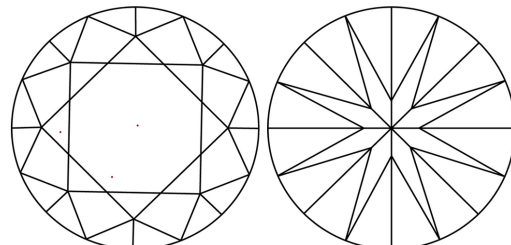
Comments: This Laboratory Grown Diamond was created by Chemical Vapor Deposition (CVD) growth process. Type IIa

PROPORTIONS



Sample Image Used

CLARITY CHARACTERISTICS



KEY TO SYMBOLS

Red symbols indicate internal characteristics. Green symbols indicate external characteristics.

COLOR

D E F G H I J Faint Very Light Light

CLARITY

FL IF VS 1-2 VS 1-2 SI 1-2 I 1-3 Flawless Internally Flawless Very Very Slightly Included Very Slightly Included Slightly Included Included

