



ELECTRONIC COPY

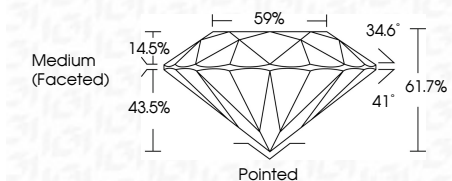
LG807623245
Report verification at igi.org



June 22, 2026
IGI Report Number **LG807623245**
Description **LABORATORY GROWN DIAMOND**
Shape and Cutting Style **ROUND BRILLIANT**
Measurements **8.32 - 8.40 X 5.16 MM**

GRADING RESULTS

Carat Weight **2.22 CARATS**
Color Grade **E**
Clarity Grade **VVS 2**
Cut Grade **IDEAL**



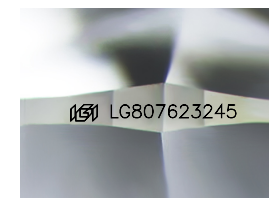
ADDITIONAL GRADING INFORMATION

Polish **EXCELLENT**
Symmetry **EXCELLENT**
Fluorescence **NONE**
Inscription(s) **(IGI) LG807623245**
Comments: This Laboratory Grown Diamond was created by Chemical Vapor Deposition (CVD) growth process. Type IIa



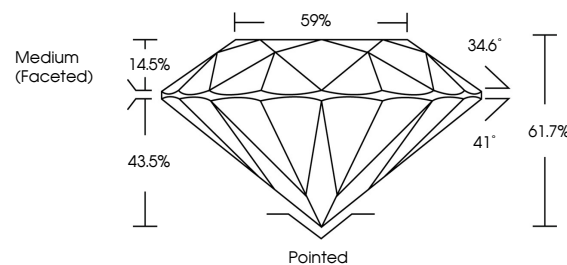
IGI

June 22, 2026
IGI Report No LG807623245
ROUND BRILLIANT
8.32 - 8.40 X 5.16 MM
2.22 CARATS
E
VVS 2
IDEAL
61.7%
59%
Medium (Faceted)
Pointed
EXCELLENT
EXCELLENT
NONE
None
(IGI) LG807623245
Comments: This Laboratory Grown Diamond was created by Chemical Vapor Deposition (CVD) growth process. Type IIa

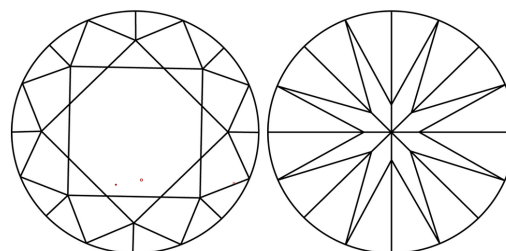


Sample Image Used

PROPORTIONS



CLARITY CHARACTERISTICS



KEY TO SYMBOLS

Red symbols indicate internal characteristics.
Green symbols indicate external characteristics.

COLOR

D E F G H I J Faint Very Light Light

CLARITY

FL	IF	VVS ¹⁻²	VS ¹⁻²	SI ¹⁻²	I ¹⁻³
Flawless	Internally Flawless	Very Very Slightly Included	Very Slightly Included	Slightly Included	Included

