



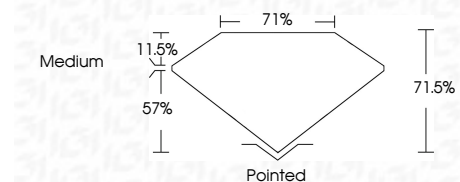
**ELECTRONIC COPY**

LG807622340  
Report verification at igi.org



June 4, 2026  
IGI Report Number **LG807622340**  
Description **LABORATORY GROWN DIAMOND**  
Shape and Cutting Style **PRINCESS CUT**  
Measurements **6.91 X 6.84 X 4.89 MM**

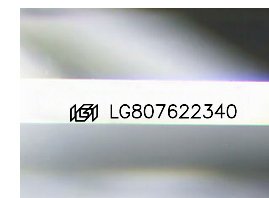
**GRADING RESULTS**  
Carat Weight **2.02 CARATS**  
Color Grade **E**  
Clarity Grade **VVS 2**



**ADDITIONAL GRADING INFORMATION**  
Polish **EXCELLENT**  
Symmetry **EXCELLENT**  
Fluorescence **NONE**  
Inscription(s) **(IGI) LG807622340**  
Comments: This Laboratory Grown Diamond was created by Chemical Vapor Deposition (CVD) growth process. Type IIa

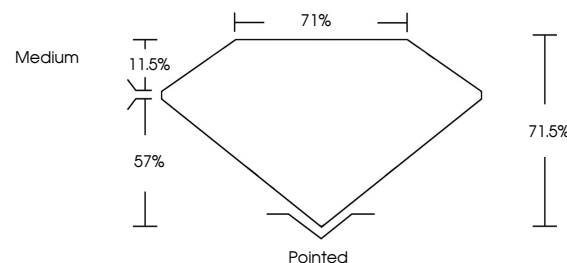


June 4, 2026  
IGI Report No **LG807622340**  
**PRINCESS CUT**  
2.02 CARATS **E**  
Carat Weight **2.02**  
Color Grade **VVS 2**  
Depth **57%**  
Table **71%**  
Girdle **Medium**  
Culet **Pointed**  
Polish **EXCELLENT**  
Symmetry **EXCELLENT**  
Fluorescence **NONE**  
Inscription(s) **(IGI) LG807622340**  
Comments: This Laboratory Grown Diamond was created by Chemical Vapor Deposition (CVD) growth process. Type IIa

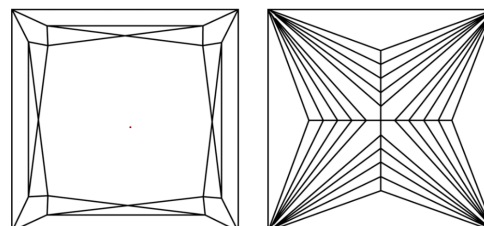


Sample Image Used

**PROPORTIONS**



**CLARITY CHARACTERISTICS**



**KEY TO SYMBOLS**

Red symbols indicate internal characteristics.  
Green symbols indicate external characteristics.

**COLOR**

D E F G H I J Faint Very Light Light

**CLARITY**

FL	IF	VVS <sup>1-2</sup>	VS <sup>1-2</sup>	SI <sup>1-2</sup>	I <sup>1-3</sup>
Flawless	Internally Flawless	Very Very Slightly Included	Very Slightly Included	Slightly Included	Included

