



**ELECTRONIC COPY**

LG807622317  
Report verification at igi.org



June 4, 2026

IGI Report Number **LG807622317**

Description **LABORATORY GROWN DIAMOND**

Shape and Cutting Style **ROUND BRILLIANT**

Measurements **8.10 - 8.14 X 5.07 MM**

**GRADING RESULTS**

Carat Weight **2.08 CARATS**

Color Grade **E**

Clarity Grade **VVS 2**

Cut Grade **IDEAL**

June 4, 2026

IGI Report Number **LG807622317**

Description **LABORATORY GROWN DIAMOND**

Shape and Cutting Style **ROUND BRILLIANT**

Measurements **8.10 - 8.14 X 5.07 MM**

**GRADING RESULTS**

Carat Weight **2.08 CARATS**

Color Grade **E**

Clarity Grade **VVS 2**

Cut Grade **IDEAL**

**ADDITIONAL GRADING INFORMATION**

Polish **EXCELLENT**

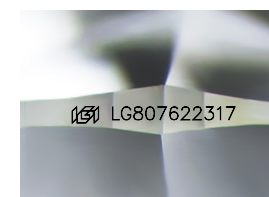
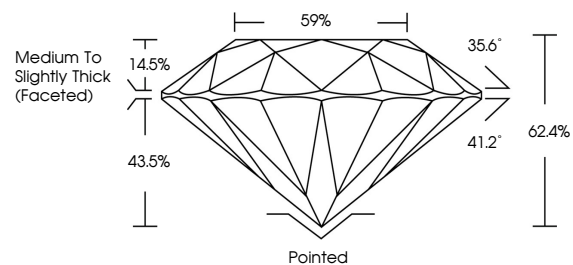
Symmetry **EXCELLENT**

Fluorescence **NONE**

Inscription(s) **IGI LG807622317**

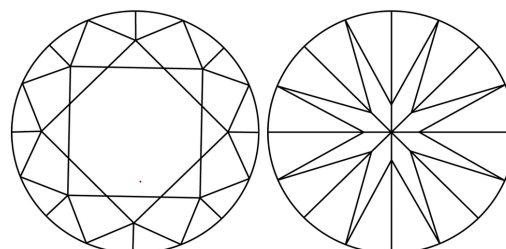
Comments: This Laboratory Grown Diamond was created by Chemical Vapor Deposition (CVD) growth process.  
Type IIa

**PROPORTIONS**



Sample Image Used

**CLARITY CHARACTERISTICS**



**KEY TO SYMBOLS**

Red symbols indicate internal characteristics.  
Green symbols indicate external characteristics.

**COLOR**

D E F G H I J Faint Very Light Light

**CLARITY**

FL	IF	VVS <sup>1-2</sup>	VS <sup>1-2</sup>	SI <sup>1-2</sup>	I <sup>1-3</sup>
Flawless	Internally Flawless	Very Very Slightly Included	Very Slightly Included	Slightly Included	Included



**ADDITIONAL GRADING INFORMATION**

Polish **EXCELLENT**

Symmetry **EXCELLENT**

Fluorescence **NONE**

Inscription(s) **IGI LG807622317**

Comments: This Laboratory Grown Diamond was created by Chemical Vapor Deposition (CVD) growth process.  
Type IIa



**IGI**



June 4, 2026  
IGI Report No LG807622317  
ROUND BRILLIANT

2.08 CARATS  
E

8.10 - 8.14 X 5.07 MM  
2.08 CARATS  
E  
VVS 2  
IDEAL  
62.4%  
59%  
Medium To Slightly Thick (Faceted)

Pointed  
EXCELLENT  
EXCELLENT  
NONE  
NONE  
IGI LG807622317

Comments: This Laboratory Grown Diamond was created by Chemical Vapor Deposition (CVD) growth process.  
Type IIa